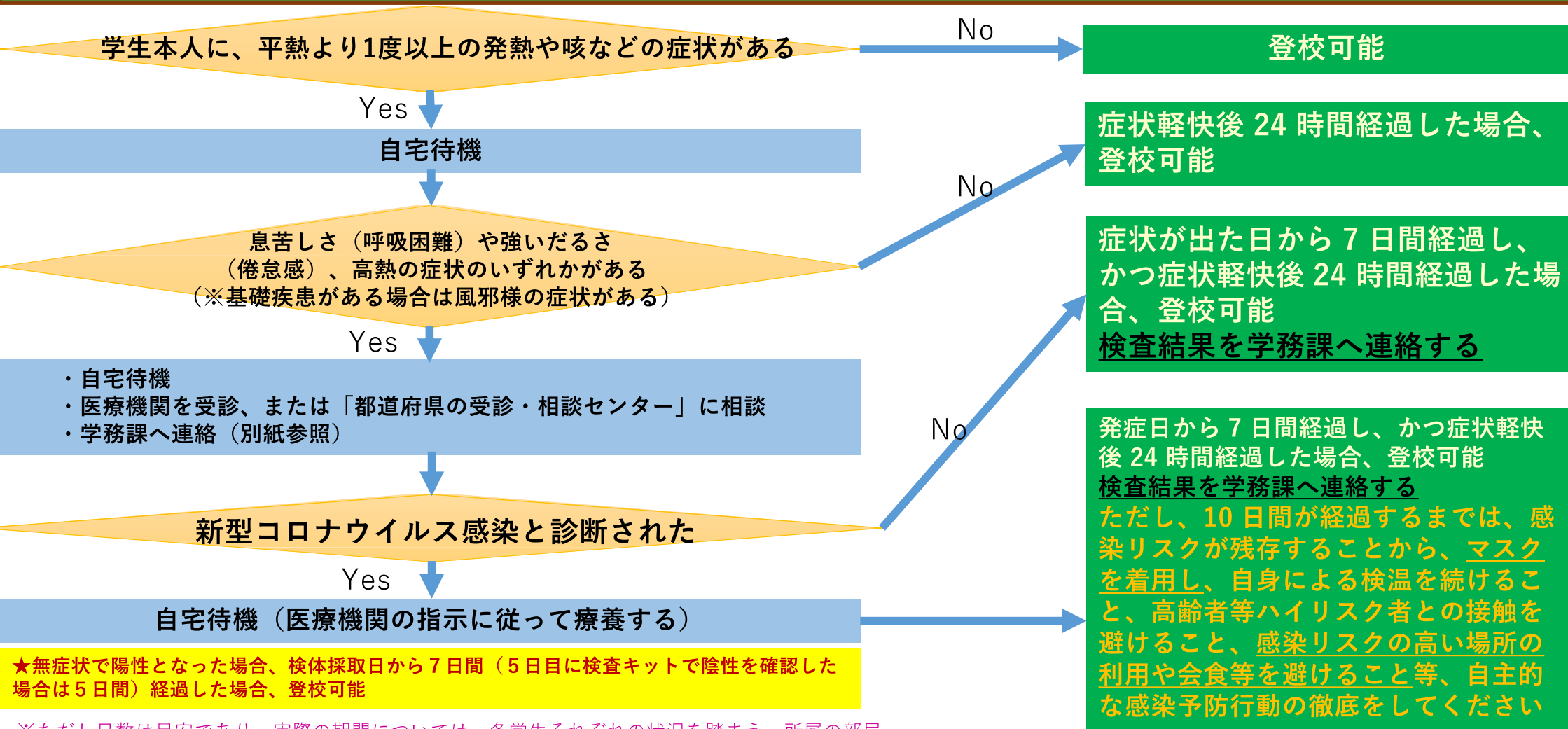


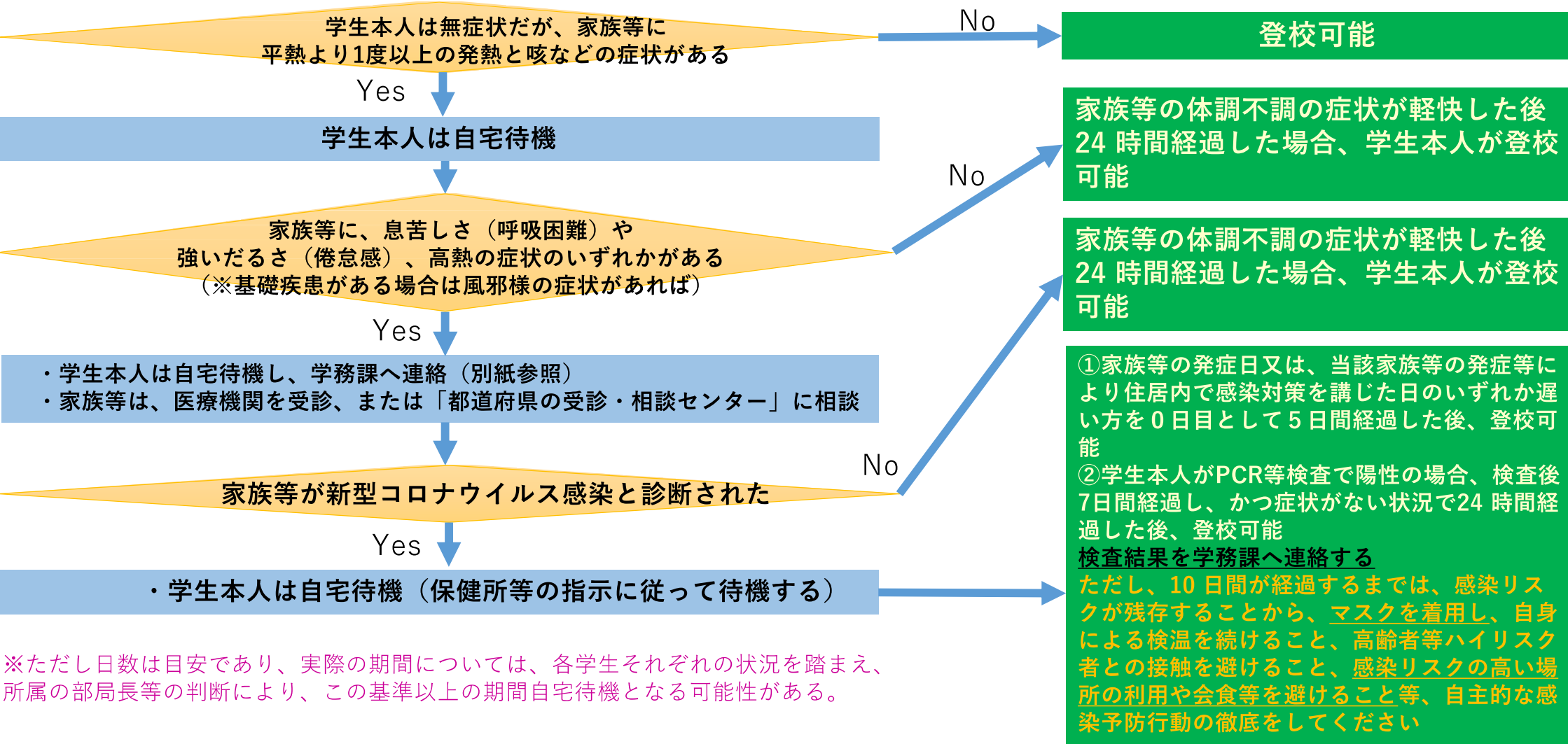
学生本人の体調不良時の自宅待機目安



★無症状で陽性となった場合、検体採取日から7日間（5日目に検査キットで陰性を確認した場合は5日間）経過した場合、登校可能

※ただし日数は目安であり、実際の期間については、各学生それぞれの状況を踏まえ、所属の部局長等の判断により、この基準以上の期間自宅待機となる可能性がある。

家族等の体調不良時の自宅待機目安



※ただし日数は目安であり、実際の期間については、各学生それぞれの状況を踏まえ、所属の部局長等の判断により、この基準以上の期間自宅待機となる可能性がある。

新型コロナウイルスに感染※¹したら、 濃厚接触者※²に指定されたら、 下記までご連絡ください。

※¹ 新型コロナウイルス感染症への感染が疑われる場合を含みます。

※² 《濃厚接触者の定義》東京都HPより

感染可能期間(発症2日前等)に接触し、次の範囲に該当する方

1.同居あるいは長時間の接触(車内・航空機内等を含む)があった

2.適切な感染防護なしに患者を診察、看護もしくは介護した

3.患者の痰や体液等の汚染物質に直接触れた可能性が高い

4.手で触れることのできる距離(目安として1メートル)で、必要な感染予防策なしで、患者と15分以上の接触があった

◎新型コロナウイルス感染に関するご相談やご質問についても、下記までご連絡ください。

◎研究室等で陽性者が発生した場合の対応は、本部より部局担当者を通じて指示します。

【連絡先】 原則、Googleフォームにてご連絡ください。

< Googleフォーム >

<https://forms.gle/x7TN85zxEATLghmZ6>



< 電話 >

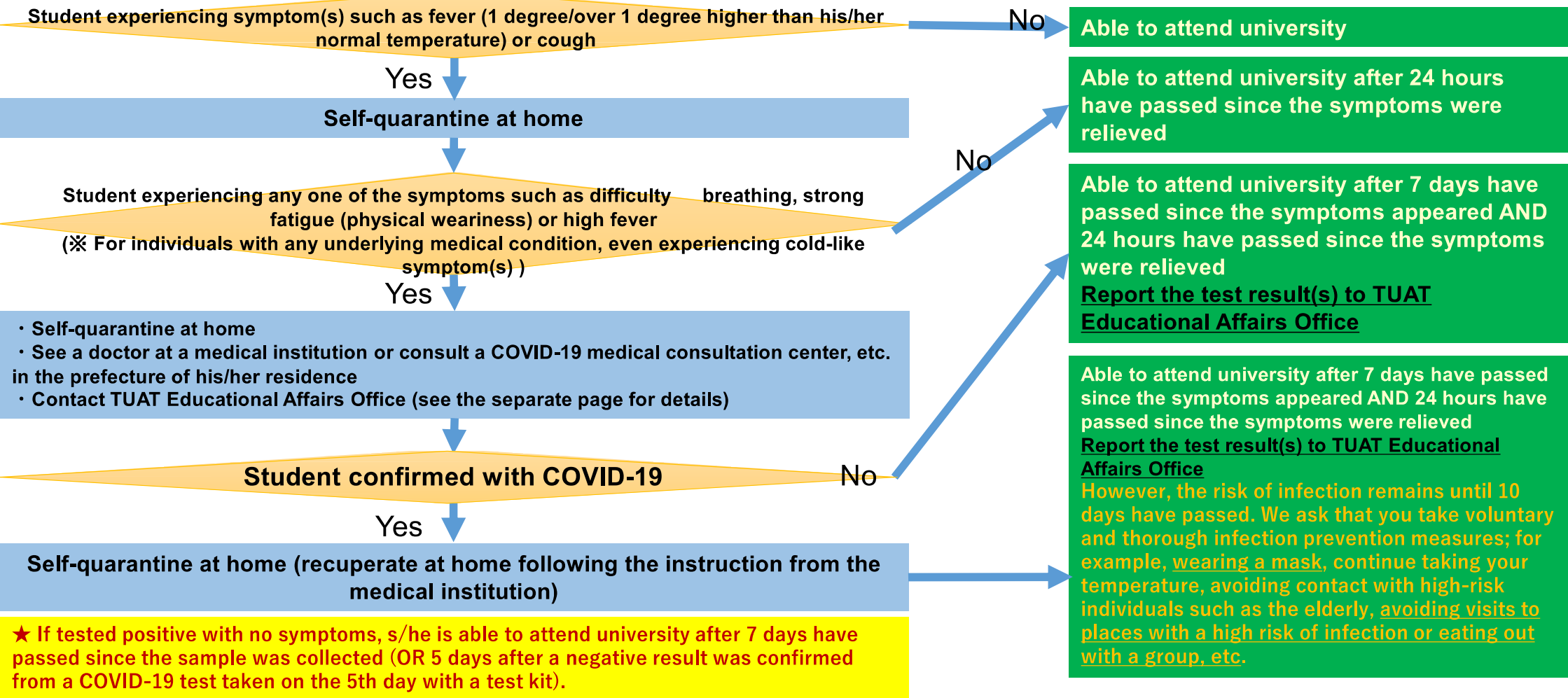
学生:042-367-5537 (学務課)

教職員:042-367-5933 (総務課環境安全管理室)

※業務時間外(休日、平日17:15~翌8:30)の電話連絡先
守衛室 042-367-5504

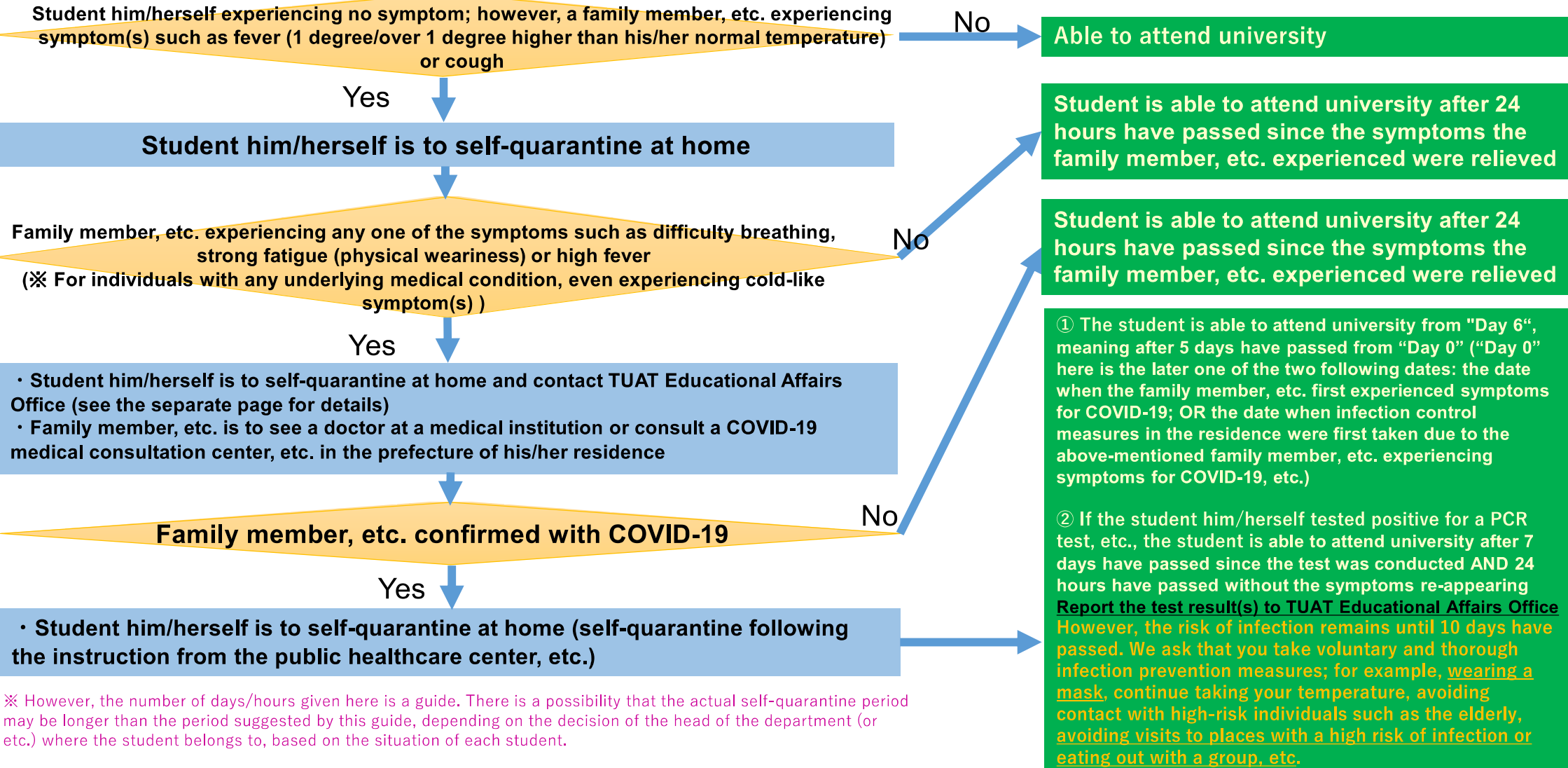
東京農工大学
学務課・総務課

Self-Quarantine Guide When Student Him/Herself is in Poor Physical Condition



※ However, the number of days/hours given here is a guide. There is a possibility that the actual self-quarantine period may be longer than the period suggested by this guide, depending on the decision of the head of the department (or etc.) where the student belongs to, based on the situation of each student.

Self-Quarantine Guide When Student's Family Member, etc. is in Poor Physical Condition



※ However, the number of days/hours given here is a guide. There is a possibility that the actual self-quarantine period may be longer than the period suggested by this guide, depending on the decision of the head of the department (or etc.) where the student belongs to, based on the situation of each student.

**If you become infected with COVID-19 ※1,
OR identified as a close contact to a COVID-19
positive individual ※2,
please contact the following.**

※1 Including suspected infection cases with COVID-19

※2 <<Definition of a close contact>> according to the website of Tokyo Metropolitan Government
Those who had contact with a person who is confirmed with COVID-19 during the time when the
infected person was possibly infectious (from 2 days before the infected person begins having symptoms,
etc.) AND if engaged in one of the following activities:

1. Lives together or had long-term contact with the infected person (including inside a car, plane, etc.)
2. Gave medical care or medical/physical assistance to the infected person without appropriate infection protection equipment
3. Was at high risk of direct contact with the infected person's respiratory secretions or bodily fluids, etc.
4. Had contact with the infected person within arm's reach (about 1 meter), without necessary infection prevention measures, for 15 minutes or longer

◎For general questions or concerns about COVID-19 transmission, you can also contact the following.

◎If one belonging to a laboratory, etc. is confirmed with COVID-19, Educational Affairs Office/General Affairs Office will provide instruction/guidelines to him/her through the office responsible for the student/staff confirmed with COVID-19.

[Contact] Please report via the following Google form, as a general rule.

<Report on Google Forms>

<https://forms.gle/x7TN85zxEATLghmZ6>

<Phone>

- Students: 042-367-5537 (Educational Affairs Office)

- Teaching/Administrative staff: 042-367-5933 (General Affairs Office - Environmental Safety and Management Office)

*During non-office hours (on weekends/holidays or on weekdays 17:15 - 8:30): 042-367-5504
(Security Office) (for international students: 070-4445-0097)



Mask Use Guidance

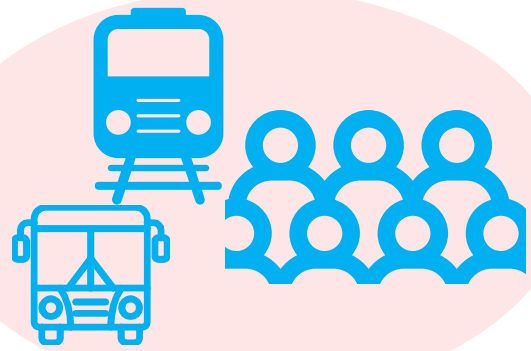
Starting From 13 March 2023

Mask Use Will Largely Depend On Personal Choice
instead of current general requirements

Mask use will be recommended for:



Medical institutions
and nursing homes



In crowded trains or buses

Mask use will provide protection for:

People who have a higher risk of serious illness
(*Especially in crowded settings)



Elderly People



People with underlying
medical conditions

Chronic liver disease
Cancer
Cardiovascular illness
etc.



Pregnant
women

Please remember to be understanding and respectful of personal choices
not to force someone to wear or take off their masks

*The operators are permitted to enforce certain regulations for its users and employees on its premises

