

2021 年度

2021year

東京農工大学大学院工学府

Tokyo University of Agriculture and Technology

Graduate School of Engineering

博士前期課程/博士後期課程

Master course/Doctoral course

国際専修

International Specialized Program

履修案内

Course Information

履修について Registration for courses

「時間割表」、「工学府履修案内(この冊子)」等を参照し、指導教員とよく相談して履修登録をしてください。

Please read the "Class Schedule" and "Course Guide (this booklet)" etc., and consult with your supervisor thoroughly before registering for the courses.

(1) 修了要件 Graduation requirements

修得しなければならない単位数

Number of credits required for graduation

博士前期課程 Master courses

| 専攻(略称) Departments (Abbreviation) | 必修科目 Required Subject | 選択必修科目 Elective Required Subject | 選択科目(※) Elective Subject(※) | 修了単位 Credits required for graduation |
|--|---|---|---|--|
| 生命工学専攻(L) Department of Biotechnology and Life Science | 所属専攻の◎印の 授業科目 Subject in L marked with ◎ | 所属専攻の◇印の 授業科目 Subject in L marked with ◇ | ・所属専攻のうち◎印、◇印以外の授業科目 ・Subject in L not mark with ◎, or ◇ ・所属専攻の後期課程の授業科目 ・Doctoral-level subject in L | 6単位を超えた選択必修科目は 選択科目に参入される Credits earned from elective required subject that exceed 6 credits will be counted as credits earned from optional elective subject |
| | 10 単位 10 credits | 6単位以上 6 credits or more | | 30単位以上 30 credits or more |
| 応用化学専攻(C) Department of Applied Chemistry | 所属専攻の◎印の 授業科目 Affiliation Department subject marked with ◎ | | ・所属専攻のうち◎印以外の授業科目 ・Affiliation Department subject not marked with ◎ ・所属専攻の後期課程の授業科目 ・Doctoral-level Affiliation Department subject | |
| 電気電子工学専攻(E) Department of Electrical and Electronic Engineering | 6単位 6 credits | | 24 単位以上 24 credits or more | 30単位以上 30 credits or more |
| 機械システム工学専攻(M) Department of Mechanical Systems Engineering | 所属専攻の◎印の 授業科目 Subject in M marked with ◎ | | ・所属専攻のうち◎印、◇印以外の授業科目 ・Subject in M not marked with ◎, or ◇ ・所属専攻の後期課程の授業科目 ・Doctoral-level subject in M | (6単位を超えた選択必修科目 は選択科目に算入される) Credits earned from elective required subject that exceed 6 credits will be counted as credits earned from optional elective subject |
| | 16 単位 16 credits | | 14単位以上 14 credits or more | 30単位以上 30 credits or more |

| | | | | |
|--|--|--|---|--|
| 物理システム工学専攻(P) Department of Applied Physics | 所属専攻の◎印の授業科目 Subject in P marked with ◎ | 所属専攻の◇印の授業科目のうち6単位以上 □印の授業科目および、所属する専攻の後期課程の□印の授業科目のうち4単位以上 6 credits or more from subject in P marked with ◇ and 4 credits or more from doctoral-level subject in P marked with □ | ・所属専攻のうち◎印、◇印、□印以外の授業科目 ・Subject in P not mark with ◎, ◇, or □ ・所属専攻の後期課程の授業科目 ・Doctoral-level subject in A | (10単位を超えた選択必修科目は選択科目に算入される) Credits earned from elective required subject that exceed 10 credits will be counted as credits earned from optional elective subject |
| | 6単位 6 credits | 10 単位以上 10 credits or more | 14 単位以上 14 credits or more | 30単位以上 30 credits or more |
| 情報工学専攻(S) Department of Computer and Information Sciences | 所属専攻の◎印の授業科目 Subject in S marked with ◎ | 所属専攻の◇印の授業科目および所属する専攻の後期課程の◇印の授業科目 Subject in S marked with ◇ and doctoral-level subject in S marked with ◇ | ・所属専攻のうち◎印、◇印以外の授業科目 ・Subject not mark with ◎, or ◇ ・所属専攻の後期課程の授業科目のうち◇印以外の授業科目 ・Doctoral-level subject in A not marked with ◇ | (10単位を超えた選択必修科目は選択科目に算入される) Credits earned from elective required subject that exceed 10 credits will be counted as credits earned from optional elective subject |
| | 6単位 6 credits | 10 単位以上 10 credits or more | 14 単位以上 14 credits or more | 30単位以上 30 credits or more |

※「選択科目」各専攻共通事項

他の専攻(共同サステナビリティ研究専攻を除く)及び農学府、生物システム応用科学府(BASE)、連合農学研究科の授業科目を、博士前期課程及び博士後期課程を通じて合わせて 15 単位を限度として選択科目に算入できる。但し、入学前既修得単位および他大学院での単位互換科目と合わせて 20 単位を超えないものとする。

* “Elective subjects” Common to all majors

Up to 15 credits in total for other majors (excluding joint sustainability research majors), Graduate School of Agriculture, Graduate School of Bio-Applications and Systems Engineering (BASE), and United Graduate School of Agricultural Science Can be included in elective courses. However, the total number of credits earned before enrollment and credit transfer courses at other graduate schools shall not exceed 20 credits.

博士後期課程 Doctoral courses

| 専攻(略称) Departments(Abbreviation) | 必修科目 Required Subject | 選択科目 Elective Subject | 修了単位 Credits required for graduation |
|---|--|---|--|
| 生命工学専攻(L) Department of Biotechnology and Life Science 応用化学専攻(C) Department of Applied Chemistry 機械システム工学専攻(M) Department of Mechanical Systems Engineering 電子情報工学専攻(A) Department of Electronic and Information Engineering | 所属する専攻の◎印の 授業科目 Affiliation Department Required Subject in marked with ◎ | ・所属する専攻のうち◎印以外の授業科目 ・ Affiliation Department Subject not marked with ◎ ・他の専攻(共同サステナビリティ研究専攻の一部科目を除く)及び生物システム応用科学府(BASE)、連合農学研究科の後期課程授業科目(他専攻・他研究科の授業科目は博士前期課程在学時及び博士後期課程在学時を通じて合わせて15単位を限度とする) ・ Other majors (excluding some subjects of the Joint Sustainability Research Major) and the Graduate School of Bio-Applications and Systems Engineering (BASE), United Graduate School of Agricultural Science Up to 15 credits in total during enrollment in the course and in the doctoral program) ・博士前期課程において当該課程の修了に必要なとする単位を超えて修得した博士後期課程授業科目(本人の申し出による) ・Doctoral-level Subject from which exceeding number of Subject were obtained toward graduation requirements for a TUAT Master Course (upon request from the applicant) | |
| | 8単位 8 credits | 4単位以上 4 credits or more | 12単位以上 12 credits or more |

(2)履修登録 Course registration

1)履修登録期間 Registration period

| 登録学期 Registration semester | 履修登録期間 Registration period | 履修登録確認期間 Course registration confirmation period |
|---|--|---|
| 前期(1・2 学期) Spring semester (first and second quarters) | 1, 3 学期の授業開始日から 2 週間 For the duration of 2 weeks from the start of courses in the first and third quarter | 履修登録期間の後 3 日間 For the duration of 3 days after the registration period ended |
| 後期(3・4 学期) Fall semester (third and fourth quarters) | | |

- ① 具体的な登録期間は、Web 掲示板でお知らせします。

The exact registration period will be notified on the WEB Bulletin Board.

- ② 集中講義の履修登録も、随時 WEB 掲示板でお知らせします。

Regarding the course registration of intensive lectures, it will be also notified on the WEB Bulletin Board

(WEB Bulletin Board) <http://t-board.office.tuat.ac.jp/T/menu.php>

2)履修登録方法 Course registration method

学務情報システム (SPICA) にアクセスして履修登録をして下さい。(WEB 履修登録)

Access the School Information System (SPICA) and register for your courses during the course registration period. (online registration)

(SPICA) <https://spica.gakumu.tuat.ac.jp/portal2/>

※ 通年科目は前期履修登録期間に登録を行い、後期に再登録する必要はありません。

なお、後期履修登録期間には登録できません。

* For new students entering Graduate School from spring (first semester), registration for all-year courses can be done during the first semester (first and second quarters) course registration period, and re-registration during the first semester (first and second quarters) is not necessary. Please note that you cannot register for these courses during the second-semester (third and four quarters) course registration period.

3)履修登録確認 Confirmation of course registration

履修登録確認期間中に、SPICA で各自履修登録内容に誤りがないかを必ず確認して下さい。誤りがある場合は必ず確認期間内に、SPICA で(履修登録と同じ要領)修正をして下さい。

During the course registration confirmation period, log on to SPICA and confirm that there are no errors with your course registration. If there is an error, correct it on SPICA during the confirmation period.

(3)「研究題目」兼「研究指導計画書」の提出

Submission of “Research Plan” & “Research Guidance Plan”

毎年 4 月に提出する書類です。WEB 掲示板から書式をダウンロードし、指導教員と研究計画をよく相談してから、指導教員に書類を提出して下さい。

Documents to be submitted in April every year. Download the form from the WEB bulletin board and After discussing the research plan with your academic advisor, submit the documents to your academic advisor.

(WEB Bulletin Board) <http://t-board.office.tuat.ac.jp/T/menu.php>

(4)成績評価 Grading system

成績評価の通知は、学務情報システム(SPICA)を通じて行われます。成績開示日は下記の通りです。

Notification of your grades is done through the School Information System (SPICA). The grade release date is as follows.

| 学期 Semesters/Quarters | | 成績開示日 Grade release date |
|-----------------------|------------------------|---|
| 前期 Spring semester | 1 学期 First quarter | 9 月中旬 Mid-September |
| | 2 学期 Second quarter | 9 月中旬以降随時 Around/after Mid-September |
| 後期 Fall semester | 3 学期 Third quarter | 3 月中旬 Mid-March |
| | 4 学期 Fourth quarter | 3 月中旬以降随時 Around/after Mid-March |

具体的な期日は、WEB 掲示板にて周知します。

The exact dates of release will be announced on the WEB Bulletin Board.

成績を閲覧し、単位を修得した授業科目を確認のうえ、次学期以降の履修計画をたてて下さい。Check the grades (check the courses taken and credits earned) and make a course plan for the next semester/quarter.

1)成績評価基準 Grading standards

成績はS・A・B・C・Dで評価を区別します。S・A・B・Cは合格です。不合格及び途中放棄はDとなり、成績表には表示されますが、成績証明書には表示されません。

Your academic performance is evaluated with S/A/B/C/D grading. S/A/B/C: pass, D: fail or withdrawal and it is displayed on the student's academic record on SPICA, but not on the academic transcript.

Grading Scale

| Evaluation | | Point | Accomplishment | Display on SPICA | Display on Transcript |
|------------|-----------|---|----------------|------------------|-----------------------|
| Passed | S | 100~90 | Outstanding | ○ | ○ |
| | A | 89~80 | Excellent | ○ | ○ |
| | B | 79~70 | Good | ○ | ○ |
| | C | 69~60 | Satisfactory | ○ | ○ |
| Failed | D | 59~0 | Fail | ○ | × |
| Completed | Completed | recognition of credits (Credit transferred without grading) | | ○ | ○ |

2) 成績確認期間 Grade confirmation period

成績には確認期間があります。成績開示時に WEB 掲示板にて周知します。

Grading has a confirmation period. It will be announced on the WEB Bulletin Board when the grades are disclosed.

(WEB Bulletin Board) <http://t-board.office.tuat.ac.jp/T/menu.php>

(5) 修業年限短縮(早期修了) Shortening enrollment period (early graduation)

特に優れた業績を上げた学生について、博士前期課程学生については 1 年以上、博士後期課程学生については博士前期課程の在学期間(2 年以上在学し修了した者は 2 年、2 年未満の者はその在学期間)を含め 3 年以上在学すれば修業年限短縮(以下「早期修了」と言う。)を申請することが出来ます。ただし、博士前期課程学生の早期修了については、本学の大学院博士後期課程へ進学する予定の者に限ります。

Outstanding students can apply for “early completion”, which shortens their enrollment period.

(Requirements for “early completion”)

- Students with excellent academic achievement
- Master course students who have been enrolled for more than 1 year at TUAT
- Doctoral course students must be enrolled for 3 years or longer at TUAT, including his/her master course enrollment period at TUAT (2 years for those who enrolled for longer than 2 years and graduated; the enrollment period for those who enrolled for shorter than 2 years and graduated)

◎ Early graduation of the master courses are limited to those who will enroll into a TUAT's doctoral course.

(6)オンライン授業 Online class

オンライン授業は Google Classroom で行います。TUAT の Google アカウントにログイン後、以下を参考に時間割表に記載のクラスコード(青字)を入力し、Classroom に参加してください。

Online classes will be held in Google Classroom. After logging in to your TUAT Google account, enter the class code (in blue) shown in the timetable, referring to the following, and join Classroom.

(クラスルームへの参加方法) (How to participate in the class room)

<https://support.google.com/edu/classroom/answer/6020297?co=GENIE.Platform%3DDesktop&hl=En>

(7)その他 Other remarks

工学府教務関係に関する連絡事項は、WEB 掲示板及び電子メール[TUAT-ID]@st.go.tuat.ac.jp で行うので、各自よく見るように心掛けて下さい。

For matters related to educational affairs, frequently check the WEB Bulletin Board and your e-mail account, [TUAT-ID]@st.go.tuat.ac.jp

◎履修登録科目については、次ページからの「教育課程表」を参照

◎Please refer to the Curriculum Table on the next page for information on registration courses.

生命工学専攻 博士前期課程 (LM) 教育課程表 (国際専修)
Department of Biotechnology and Life Science Master Course (LM) Curriculum Table
(International Specialized Program)

| Course classification | | Course title | Course code | Credit | Instructor(s) | Academic year (Semester) | | | |
|-----------------------|----------------------------------|--|-------------|--------|--|--------------------------|-----|------|-----|
| | | | | | | 2021 | | 2022 | |
| | | | | | | 1st | 2nd | 1st | 2nd |
| 生体機能工学 | Biotechnology 1 | ◇ 生物情報工学特論 Bio-Informatics | 1060102 | 2 | Kuroda | | ○ | | |
| 応用生物学 | Biotechnology 2 | ◇ 生物有機化学特論 Bio-organic Chemistry | 1060111 | 2 | K. Sakurai・Tera | | ○ | | ○ |
| 学際講義科目 | Interdisciplinary Lectures | ◇ 生命工学英語特論Ⅰ * International Research: Special Lecture Writing and Presentation for Biotechnology I | 1060187 | 2 | McGahan (Part-Time Instructor) | ○ | | ○ | |
| | | ◇ 生命工学英語特論Ⅱ * International Research: Special Lecture Writing and Presentation for Biotechnology II | 1060188 | 2 | McGahan (Part-Time Instructor) | | ○ | | ○ |
| | | ◇ ブレインストーミング・イン・イングリッシュ Brainstorming in English | 1060190 | 1 | Kuroda・K. Sakurai T. Mori・(Baldwin) | | ○ | | ○ |
| 専攻研修科目 | Major-specific Practical Courses | 生体機能工学プレゼンテーション特論Ⅰ Biofunction Engineering: Presentation I | See p19 | 2 | Instructor | ○ | | ○ | |
| | | 生体機能工学プレゼンテーション特論Ⅱ Biofunction Engineering: Presentation II | See p19 | 2 | Instructor | ○ | | ○ | |
| | | 応用生物学プレゼンテーション特論Ⅰ Biotechnology: Presentation I | See p19 | 2 | Instructor | ○ | | ○ | |
| | | 応用生物学プレゼンテーション特論Ⅱ Biotechnology: Presentation II | See p19 | 2 | Instructor | ○ | | ○ | |
| | | ◎ 生命工学先端研究 Biotechnology and Life Science: Advanced Study | See p19 | 6 | Instructor | ○ | | ○ | |
| | | 生命工学セミナーⅠ Biotechnology and Life Science: Seminar I | See p19 | 2 | Instructor | ○ | | ○ | |
| | | 生命工学セミナーⅡ Biotechnology and Life Science: Seminar II | See p19 | 2 | Instructor | | ○ | | ○ |
| | | 生命工学セミナーⅢ Biotechnology and Life Science: Seminar III | See p19 | 2 | Instructor | ○ | | ○ | |
| | | 生命工学セミナーⅣ Biotechnology and Life Science: Seminar IV | See p19 | 2 | Instructor | | ○ | | ○ |
| | | ◎ 生命工学特別研究 Biotechnology and Life Science: Special Study | See p19 | 4 | Instructor | ○ | | ○ | |
| 専攻共通科目 | Major-specific Common Courses | ◇ 生体機能工学フロンティア特論 Frontiers of Biofunction Engineering | 1060705 | 2 | Instructor | | ○ | | |
| | | ◇ 応用生物学フロンティア特論 Frontiers of Biotechnology | 1060706 | 2 | Instructor | | | | ○ |
| 共通科目 | Common Courses | 物質応用化学講座特別講義Ⅰ Materials and Applied Chemistry: Special Advanced Lecture I | 1060207 | 2 | Noma | ○ | | | |
| | | 有機材料化学講座特別講義Ⅱ Organic and Polymer Materials Chemistry: Special Lecture II | 1060216 | 2 | Atomi・M. Shimizu | ○ | | | |
| | | 環境化学工学特論Ⅰ Advanced Chemical Environmental Engineering I | 1060222 | 2 | Terada・Riya | | | | ○ |
| | | 制御システム特論 Advanced Control System Analysis | 1060307 | 2 | Pongsathorn | | ○ | | ○ |
| | | 機械要素解析特論 Advanced Mechanical Components Analysis | 1060310 | 2 | Ikeda | | ○ | | |
| | | 機械システム工学特論 Advances in Mechanical Systems Engineering | 1060381 | 2 | Multiple Instructors | | ○ | | ○ |
| | | 応用量子力学 Advanced Quantum Mechanics | 1060488 | 2 | A. Hatakeyama・Maehashi | | ○ | | ○ |
| | | 並列処理・ネットワーク特論 Parallel Processing and Computer Networks | 1060603 | 2 | Nakajo | | ○ | | ○ |
| | | ビジュアルコンピューティング特論 Visual Computing | 1060604 | 2 | T. Saito | | ○ | | ○ |
| | | 科学特論Ⅰ Science: Special Lecture I | 1060001 | 2 | M. Ito | | | | |
| | | 科学特論Ⅱ Science: Special Lecture II | 1060005 | 2 | T. Sato | | ○ | | ○ |
| | | 科学特論Ⅲ Science: Special Lecture III | 1060007 | 2 | Tobishima | | | | |
| | | 科学特論Ⅳ Science: Special Lecture IV | 1060011 | 2 | Okano | | | | |
| | | 技術マネジメント特論Ⅰ Technology Management I | 1060013 | 2 | TBD | | | | |
| | | 技術革新論 Technological Innovation Theory | 1060014 | 2 | TBD | | | | |
| | | 短期インターンシップ Short-term Internship | 1060131 | 1 | Instructor | | | | |
| | | インターンシップⅠ Internship I | 1060151 | 2 | Instructor | | | | |
| | | ◇ 学内インターンシップⅠ On-campus Internship I | 1060171 | 2 | Instructor | | | | |

◎: Required Subject, ◇: Elective Required Subject, Other than ◎ or ◇: Elective Subject, ※: Cooperation Areas
 * Note: Only one course will be counted as Elective Required Subject.

ドクターコース
生命工学専攻 博士後期課程（LD）教育課程表（国際専修）
 Department of Biotechnology and Life Science Doctoral Course (LD) Curriculum Table
 (International Specialized Program)

| Course classification | | Course title | Course code | Credit | Instructor(s) | Academic year (Semester) | | | |
|-----------------------|----------------------------------|---|--------------------|--------|-------------------------------------|--------------------------|-----|------|-----|
| | | | | | | 2021 | | 2022 | |
| | | | | | | 1st | 2nd | 1st | 2nd |
| 生体機能工学 | Biotechnology 1 | バイオインフォマティクス特論 Bioinformatics | 1080102 | 2 | Kuroda | | ○ | | |
| 応用生物工学 | Biotechnology 2 | 生命分子反応特論 Biomolecular Reaction | 1080111 | 2 | K. Sakurai・Tera・Nagasawa | | ○ | | ○ |
| 学際講義科目 | Interdisciplinary Lectures | 先端生命工学英語特論Ⅰ International Research Writing and Presentation for Biotechnology: Advanced Lecture I | 1080184 | 2 | McGahan (Part-Time Instructor) | ○ | | ○ | |
| | | 先端生命工学英語特論Ⅱ International Research Writing and Presentation for Biotechnology: Advanced Lecture II | 1080185 | 2 | McGahan (Part-Time Instructor) | | ○ | | ○ |
| | | 先端ブレインストーミング・イン・イングリッシュ Advanced Brainstorming in English | 1080191 | 1 | Kuroda・K. Sakurai・T. Mori・(Baldwin) | | ○ | | ○ |
| 専攻研修科目 | Major-specific Practical Courses | ◎ 生命工学特別セミナー特論Ⅰ Biotechnology and Life Science: Special Seminar I | See p22 | 2 | Instructor | ○ | | ○ | |
| | | ◎ 生命工学先端計画研究 Advanced Research Proposal on Biotechnology and Life Science | See p22 | 6 | Instructor | ○ | | ○ | |
| 専攻共通科目 | Major-specific Common Courses | 先端生体機能工学フロンティア特論 Advanced Frontiers of Biofunction Engineering | 1080192 | 2 | Instructor | | ○ | | |
| | | 先端応用生物工学フロンティア特論 Advanced Frontiers of Biotechnology | 1080193 | 2 | Instructor | | | | ○ |
| 共通科目 | Common Courses | 環境化学工学特論Ⅱ Advanced Chemical Environmental Engineering II | 1080224 | 2 | Terada・Riya | | ○ | | |
| | | 化学プロセス工学特論Ⅱ Advanced Chemical Process Engineering II | 1080222 | 2 | Yamashita | | ○ | | ○ |
| | | 量子光電子工学特論 Selected Topics in Quantum Electronics and Photonics | 1080405 | 2 | Miyaji | | | | ○ |
| | | 電子機能素子工学特論 Advanced Electronic Functional Device Engineering | 1080417 | 2 | (Sameshima) | ○ | | ○ | |
| | | 科学特論Ⅴ Engineering Science: Advanced Lecture V | 1080001 | 2 | | | | | |
| | | 科学特論Ⅵ Engineering Science: Advanced Lecture VI | 1080002 | 2 | | | | | |
| | | 科学特論Ⅶ Engineering Science: Advanced Lecture VII | 1080003 | 2 | TBD | | | | |
| | | 科学特論Ⅷ Engineering Science: Advanced Lecture VIII | 1080004 | 2 | | | | | |
| | | 技術マネジメント特論Ⅱ Technology Management II | 1080005 | 2 | TBD | | | | |
| | | 工学府特別講義（ ） Engineering: Special Lecture（ ） | 1080006 | 2 | TBD | | | | |
| | | 工学府特別講義（ ） Engineering: Special Lecture（ ） | 1080007 | 2 | TBD | | | | |
| | | 工学府特別講義（ ） Engineering: Special Lecture（ ） | 1080008 | 2 | TBD | | | | |
| | | 工学府特別講義（国際コミュニケーションⅠ） Engineering (International Communication I): Special Lecture | 1080009 | 1 | Agyeman | ○ | | ○ | |
| | | 工学府特別講義（国際コミュニケーションⅡ） Engineering (International Communication II): Special Lecture | 1080010 | 1 | Agyeman | | ○ | | ○ |
| | | 工学府特別講義（国際コミュニケーションⅢ） Engineering (International Communication III): Special Lecture | 1080011 | 1 | K. Shinohara | ○ | | ○ | |
| | | インターンシップⅡ Internship II | 1080151～ | 2 | Instructor | | | | |
| | | 学内インターンシップⅡ On-campus Internship II | 1080171～ | 2 | Instructor | | | | |
| | | ★ 科学日本語特論 Advanced Scientific Japanese | 1080801 | 1 | Y. Hatakeyama | | | | |
| | | ★ 科学英語特論Ⅰ Advanced Scientific English I | 1080802 | 1 | Shirakashi | | | | |
| | | ★ 科学英語特論Ⅱ Advanced Scientific English II | 1080803 | 1 | Shirakashi | | | | |
| | | ★ 科学英語特論Ⅲ Advanced Scientific English III | 1080804 1080805 | 1 | Shirakashi | | | | |
| | | ★ グラントプロポーザル特論（イノベーション） Introduction to Grant Proposal Writing | 1080806 | 1 | Ikebukuro | | | | |
| | | ★ 海外研修教育（イノベーション） International Internship Training | 1080807 1080808 | 1 | Ikebukuro | | | | |

◎: Required Subject, Other than ◎: Elective Subject, ※: Cooperation Areas
 ★: Subject available for Science-oriented Personnel Training Program

マ ス タ ー コ ー ス
応用化学専攻 博士前期課程 (CM) 教育課程表 (国際専修)
 Department of Applied Chemistry Master Course (CM) Curriculum Table
 (International Specialized Program)

| Course classification | | Course title | Course code | Credit | Instructor(s) | Academic year (Semester) | | | |
|-----------------------|---|--|-------------|--------|-----------------------------------|--------------------------|-----|------|-----|
| | | | | | | 2021 | | 2022 | |
| | | | | | | 1st | 2nd | 1st | 2nd |
| 物質応用化学 | Materials and Applied Chemistry Course | 物質応用化学講座特別講義Ⅰ Materials and Applied Chemistry: Special Advanced Lecture I | 1060207 | 2 | Noma | ○ | | | |
| 有機材料化学 | Organic and Polymer Materials Chemistry | 有機材料化学講座特別講義Ⅱ Organic and Polymer Materials Chemistry: Special Lecture II | 1060216 | 2 | M. Shimizu | ○ | | | |
| システム化学工学 | Division of Chemical Engineering | 環境化学工学特論Ⅰ Advanced Chemical Environmental Engineering I | 1060222 | 2 | Terada・Riya | | | | ○ |
| 専攻共通科目 | Major-specific Common Courses | ◎ 応用化学セミナーⅠ Applied Chemistry: Advanced Seminar I | | 4 | Instructor | ○ | | ○ | |
| | | 応用化学セミナーⅡ Applied Chemistry: Advanced Seminar II | | 4 | Instructor | ○ | | ○ | |
| | | ◎ 応用化学特別実験 Advanced Experiments in Applied Chemistry | | 2 | Instructor | ○ | | ○ | |
| | | 応用化学特別研究 Advanced Research in Applied Chemistry | | 4 | Instructor | ○ | | ○ | |
| | | ※ フロンティア応用化学特論Ⅰ Frontier Chemistry I | 1060704 | 2 | Noguchi (Part-Time Instructor) | ○ | | | |
| | | ※ フロンティア応用化学特論Ⅱ Frontier Chemistry II | 1060707 | 2 | TBD | | | | |
| | | ※ フロンティア応用化学特論Ⅲ Frontier Chemistry III | 1060708 | 2 | TBD | | | | |
| 共通科目 | Common Courses | 生体機能工学フロンティア特論 Frontiers of Biofunction Engineering | 1060705 | 2 | Instructor | | ○ | | |
| | | 応用生物学フロンティア特論 Frontiers of Biotechnology | 1060706 | 2 | Instructor | | | | ○ |
| | | 生命工学英語特論Ⅰ International Research: Special Lecture Writing and Presentation for Biotechnology I | 1060187 | 2 | McGahan (Part-Time Instructor) | ○ | | ○ | |
| | | 生命工学英語特論Ⅱ International Research: Special Lecture Writing and Presentation for Biotechnology II | 1060188 | 2 | McGahan (Part-Time Instructor) | | ○ | | ○ |
| | | 制御システム特論 Advanced Control System Analysis | 1060307 | 2 | Pongsathorn | | ○ | | ○ |
| | | 機械要素解析特論 Advanced Analysis of Mechanical Components | 1060310 | 2 | Ikeda | | ○ | | |
| | | 機械システム工学特論 Advances in Mechanical Systems Engineering | 1060381 | 2 | Multiple Instructors | | ○ | | ○ |
| | | 応用量子力学 Advanced Quantum Mechanics | 1060488 | 2 | A. Hatakeyama・Maehashi | | ○ | | ○ |
| | | 並列処理・ネットワーク特論 Parallel Processing and Computer Networks | 1060603 | 2 | Nakajo | | ○ | | ○ |
| | | ビジュアルコンピューティング特論 Visual Computing | 1060604 | 2 | T. Saito | | ○ | | ○ |
| | | 科学特論Ⅰ Science: Special Lecture I | 1060001 | 2 | M. Ito | | | | |
| | | 科学特論Ⅱ Science: Special Lecture II | 1060004 | 2 | T. Sato | | ○ | | ○ |
| | | 科学特論Ⅲ Science: Special Lecture III | 1060007 | 2 | Tobishima | | | | |
| | | 科学特論Ⅳ Science: Special Lecture IV | 1060011 | 2 | Okano | | | | |
| | | 技術マネジメント特論Ⅰ Technology Management I | 1060013 | 2 | TBD | | | | |
| | | 技術革新論 Technological Innovation Theory | 1060014 | 2 | TBD | | | | |
| | | 短期インターンシップ Short-term Internship | 1062401～ | 1 | Instructor | | | | |
| | | インターンシップⅠ Internship I | 1062501～ | 2 | Instructor | | | | |
| | | 学内インターンシップⅠ On-campus Internship I | 1062601～ | 2 | Instructor | | | | |

◎: Required Subject
 Other than ◎: Elective Subject
 ※: Cooperation Areas

ドクターコース
応用化学専攻 博士後期課程 (CD) 教育課程表 (国際専修)
Department of Applied Chemistry Doctoral Course (CD) Curriculum Table
(International Specialized Program)

| Course classification | | Course title | Course code | Credit | Instructor(s) | Academic year (Semester) | | | |
|-----------------------|----------------------------------|---|--------------------|--------|------------------------------------|--------------------------|-----|------|-----|
| | | | | | | 2021 | | 2022 | |
| | | | | | | 1st | 2nd | 1st | 2nd |
| システム化学工学 | Division of Chemical Engineering | 化学プロセス工学特論Ⅱ Advanced Chemical Process Engineering II | 1080222 | 2 | Yamashita | | ○ | | ○ |
| | | 環境化学工学特論Ⅱ Advanced Chemical Environmental Engineering II | 1080224 | 2 | Terada・Riya | | ○ | | |
| 専攻共通科目 | Major-specific Common Courses | 応用化学特別講義Ⅰ Applied Chemistry: Advanced Lecture I | 1080281 | 2 | (Part-Time Instructor) | | | | |
| | | 応用化学特別講義Ⅱ Applied Chemistry: Advanced Lecture II | 1080282 | 2 | (Part-Time Instructor) | | | | |
| | | ◎ 応用化学セミナーⅢ Applied Chemistry: Advanced Seminar III | See P23 | 2 | Instructor | ○ | | ○ | |
| | | 応用化学セミナーⅣ Applied Chemistry: Advanced Seminar IV | See P23 | 2 | Instructor | ○ | | ○ | |
| | | 応用化学セミナーⅤ Applied Chemistry: Advanced Seminar V | See P23 | 2 | Instructor | ○ | | ○ | |
| | | ※ フロンティア応用化学特論Ⅳ Frontier Chemistry IV | 1080704 | 2 | TBD | | | | |
| | | ※ フロンティア応用化学特論Ⅴ Frontier Chemistry V | 1080705 | 2 | Kakiuchi (Part-Time Instructor) | | | ○ | |
| | | ※ フロンティア応用化学特論Ⅵ Frontier Chemistry VI | 1080706 | 2 | TBD | | | | |
| | | ◎ 特別計画研究 Applied Chemistry: Special Research Planning | See P23 | 6 | Instructor | ○ | | ○ | |
| | | 特別教育研修 Special Educational Training | | 2 | TBD | | | | |
| 共通科目 | Common Courses | 先端生体機能工学フロンティア特論 Advanced Frontiers of Biofunction Engineering | 1080192 | 2 | Instructor | | ○ | | |
| | | 先端応用生物学フロンティア特論 Advanced Frontiers of Biotechnology | 1080193 | 2 | Instructor | | | | ○ |
| | | 先端生命工学英語特論Ⅰ International Research Writing and Presentation for Biotechnology: Advanced Lecture I | 1080184 | 2 | McGahan (Part-Time Instructor) | ○ | | ○ | |
| | | 先端生命工学英語特論Ⅱ International Research Writing and Presentation for Biotechnology: Advanced Lecture II | 1080185 | 2 | McGahan (Part-Time Instructor) | | ○ | | ○ |
| | | 量子光電子工学特論 Selected Topics in Quantum Electronics and Photonics | 1080405 | 2 | Miyaji | | | | ○ |
| | | 電子機能素子工学特論 Advanced Electronic Functional Device Engineering | 1080417 | 2 | (Sameshima) | ○ | | ○ | |
| | | 科学特論Ⅴ Engineering Science: Advanced Lecture V | 1080001 | 2 | | | | | |
| | | 科学特論Ⅵ Engineering Science: Advanced Lecture VI | 1080002 | 2 | | | | | |
| | | 科学特論Ⅶ Engineering Science: Advanced Lecture VII | 1080003 | 2 | TBD | | | | |
| | | 科学特論Ⅷ Engineering Science: Advanced Lecture VIII | 1080004 | 2 | | | | | |
| | | 技術マネジメント特論Ⅱ Technology Management II | 1080005 | 2 | TBD | | | | |
| | | 工学府特別講義 () Engineering(): Special Lecture | 1080006 | 2 | TBD | | | | |
| | | 工学府特別講義 () Engineering(): Special Lecture | 1080007 | 2 | TBD | | | | |
| | | 工学府特別講義 () Engineering(): Special Lecture | 1080008 | 2 | TBD | | | | |
| | | 工学府特別講義 (国際コミュニケーションⅠ) Engineering (International Communication I): Special Lecture | 1080009 | 1 | Agyeman | ○ | | ○ | |
| | | 工学府特別講義 (国際コミュニケーションⅡ) Engineering (International Communication II): Special Lecture | 1080010 | 1 | Agyeman | | ○ | | ○ |
| | | 工学府特別講義 (国際コミュニケーションⅢ) Engineering (International Communication III): Special Lecture | 1080011 | 1 | K. Shinohara | ○ | | ○ | |
| | | インターンシップⅡ Internship II | 1082501～ | 2 | Instructor | | | | |
| | | 学内インターンシップⅡ On-campus Internship II | 1082601～ | 2 | Instructor | | | | |
| | | ★ 科学日本語特論 Advanced Scientific Japanese | 1080801 | 1 | Y. Hatakeyama | | | | |
| | | ★ 科学英語特論Ⅰ Advanced Scientific English I | 1080802 | 1 | Shirakashi | | | | |
| | | ★ 科学英語特論Ⅱ Advanced Scientific English II | 1080803 | 1 | Shirakashi | | | | |
| | | ★ 科学英語特論Ⅲ Advanced Scientific English III | 1080804 1080805 | 1 | Shirakashi | | | | |
| | | ★ グラントプロポーザル特論 (イノベーション) Introduction to Grant Proposal Writing | 1080806 | 1 | Ikebukuro | | | | |
| | | ★ 海外研修教育 (イノベーション) International Internship Training | 1080807 1080808 | 1 | Ikebukuro | | | | |

◎: Required Subject
Other than ◎: Elective Subject
※: Cooperation Areas
★: Subject available for Science-oriented Personnel Training Program

マスターコース
機械システム工学専攻 博士前期課程 (MM) 教育課程表 (国際専修)
 Department of Mechanical Systems Engineering Master Course (MM) Curriculum Table
 (International Specialized Program)

| Course classification | | Course title | Course code | Credit | Instructor(s) | Academic year (Semester) | | | |
|--|--|--|-------------|--------|-----------------------------------|--------------------------|-----|------|-----|
| | | | | | | 2021 | | 2022 | |
| | | | | | | 1st | 2nd | 1st | 2nd |
| <div>機械システム工学専攻</div> <div>設計生産システム・機械知能システム工学</div> | Fundamental System Analysis / Design and Production System / Intelligent Systems Engineering | 制御システム特論 Advanced Control System Engineering | 1060307 | 2 | Pongsathorn | | ○ | | ○ |
| | | 機械要素解析特論 Advanced Analysis of Mechanical Components | 1060310 | 2 | Ikeda | | ○ | | |
| 学際科目 | Interdisciplinary Courses | 実践機械システム工学 I Mechanical Systems Engineering: Practice I | 1060351 | 1 | Multiple Instructors | ○ | | ○ | |
| 専攻共通科目 | Major-specific Common Courses | ◎ 機械システム工学特論 Advances in Mechanical Systems Engineering | 1060381 | 2 | Multiple Instructors | | ○ | | ○ |
| | | ◎ 機械システム工学セミナー I Mechanical Systems Engineering Thesis: Seminar I | See P20 | 4 | Instructor | ○ | | ○ | |
| | | ◎ 機械システム工学セミナー II Mechanical Systems Engineering Thesis: Seminar II | See P20 | 4 | Instructor | ○ | | ○ | |
| | | ◎ 機械システム工学特別実験 Preparation of Mechanical Systems Engineering Thesis | 1063250 | 2 | Instructor | ○ | | ○ | |
| | | ◎ 機械システム工学特別研究 Directed Research in Advanced Mechanical Systems Engineering | 1063350 | 4 | Instructor | ○ | | ○ | |
| | | ※ フロンティア機械システム特論 I The Frontier Mechanical System I | 1060707 | 2 | TBD | | | | |
| | | ※ フロンティア機械システム特論 II The Frontier Mechanical System II | 1060708 | 2 | TBD | | | | |
| | | ※ フロンティア機械システム特論 III The Frontier Mechanical System III | 1060709 | 2 | TBD | | | | |
| | | 機械システム工学実習 Practices in Mechanical Systems Engineering | 1060382 | 2 | TBD | | | | |
| 共通科目 | Common Courses | 生体機能工学フロンティア特論 Frontiers of Biofunction Engineering | 1060705 | 2 | Instructor | | ○ | | |
| | | 応用生物学フロンティア特論 Frontiers of Biotechnology | 1060706 | 2 | Instructor | | | | ○ |
| | | 生命工学英語特論 I International Research: Special Lecture Writing and Presentation for Biotechnology I | 1060187 | 2 | McGahan (Part-Time Instructor) | ○ | | ○ | |
| | | 生命工学英語特論 II International Research: Special Lecture Writing and Presentation for Biotechnology II | 1060188 | 2 | McGahan (Part-Time Instructor) | | ○ | | ○ |
| | | 物質応用化学講座特別講義 I Materials and Applied Chemistry: Special Advanced Lecture I | 1060207 | 2 | Noma | | | ○ | |
| | | 有機材料化学講座特別講義 II Organic and Polymer Materials Chemistry: Special Lecture II | 1060216 | 2 | Atomi・M. Shimizu | | | ○ | |
| | | 環境化学工学特論 I Advanced Chemical Environmental Engineering I | 1060222 | 2 | Terada・Riya | | | | ○ |
| | | 応用量子力学 Advanced Quantum Mechanics | 1060488 | 2 | A. Hatakeyama・Maehashi | | ○ | | ○ |
| | | 並列処理・ネットワーク特論 Parallel Processing and Computer Networks | 1060603 | 2 | Nakajo | | ○ | | ○ |
| | | ビジュアルコンピューティング特論 Visual Computing | 1060604 | 2 | T. Saito | | ○ | | ○ |
| | | 科学特論 I Science: Special Lecture I | 1060001 | 2 | M. Ito | | | | |
| | | 科学特論 II Science: Special Lecture II | 1060004 | 2 | T. Sato | | ○ | | ○ |
| | | 科学特論 III Science: Special Lecture III | 1060007 | 2 | Tobishima | | | | |
| | | 科学特論 IV Science: Special Lecture IV | 1060011 | 2 | Okano | | | | |
| | | 技術マネジメント特論 I Technology Management I | 1060013 | 2 | TBD | | | | |
| | | 技術革新論 Technological Innovation Theory | 1060014 | 2 | TBD | | | | |
| | | 短期インターンシップ Short-term Internship | 1063501～ | 1 | Instructor | | | | |
| | | インターンシップ I Internship I | 1063601～ | 2 | Instructor | | | | |
| | | 学内インターンシップ I On-campus Internship I | 1063701～ | 2 | Instructor | | | | |

◎: Required Subject
 Other than ◎: Elective Subject
 ※: Cooperation Areas

ドクターコース
機械システム工学専攻 博士後期課程 (MD) 教育課程表 (国際専修)
Department of Mechanical Systems Engineering Doctoral Course (MD) Curriculum Table
(International Specialized Program)

| Course classification | | Course title | Course code | Credit | Instructor(s) | Academic year (Semester) | | | |
|-----------------------|-------------------------------|---|-------------|--------|-----------------------------------|--------------------------|-----|------|-----|
| | | | | | | 2021 | | 2022 | |
| | | | | | | 1st | 2nd | 1st | 2nd |
| 専攻共通科目 | Major-specific Common Courses | 機械システム工学特別講義Ⅰ Mechanical Systems Engineering: Extra Lecture I | 1080381 | 2 | TBD | | | | |
| | | 機械システム工学特別講義Ⅱ Mechanical Systems Engineering: Extra Lecture II | 1080382 | 2 | TBD | | | | |
| | | ◎ 機械システム工学特別セミナーⅠ Mechanical Systems Engineering: Special Seminar I | | 2 | Instructor | ○ | | ○ | |
| | | 機械システム工学特別セミナーⅡ Mechanical Systems Engineering: Special Seminar II | | 2 | Instructor | ○ | | ○ | |
| | | 機械システム工学特別セミナーⅢ Mechanical Systems Engineering: Special Seminar III | | 2 | Instructor | ○ | | ○ | |
| | | ※ フロンティア機械システム特論Ⅳ The Frontier Mechanical System IV | 1080707 | 2 | Takami・Matsui・Takigami・(Suzuki) | | ○ | | ○ |
| | | ※ フロンティア機械システム特論Ⅴ The Frontier Mechanical System V | 1080708 | 2 | TBD | | | | |
| | | ※ フロンティア機械システム特論Ⅵ The Frontier Mechanical System VI | 1080709 | 2 | TBD | | | | |
| | | 機械システム工学特別実習 Advanced Practice in Mechanical Systems Engineering | 1080383 | 2 | TBD | | | | |
| | | ◎ 特別計画研究 Research Proposition for Selected Topics | | 6 | Instructor | ○ | | ○ | |
| | | 特別教育研修 Special Educational Training | 1083401～ | 2 | TBD | | | | |
| 共通科目 | Common Courses | 先端生体機能工学フロンティア特論 Advanced Frontiers of Biofunction Engineering | 1080192 | 2 | Instructor | | ○ | | |
| | | 先端応用生物工学フロンティア特論 Advanced Frontiers of Biotechnology | 1080193 | 2 | Instructor | | | | ○ |
| | | 先端生命工学英語特論Ⅰ International Research Writing and Presentation for Biotechnology: Advanced Lecture I | 1080184 | 2 | McGahan (Part-Time Instructor) | ○ | | ○ | |
| | | 先端生命工学英語特論Ⅱ International Research Writing and Presentation for Biotechnology: Advanced Lecture II | 1080185 | 2 | McGahan (Part-Time Instructor) | | ○ | | ○ |
| | | 環境化学工学特論Ⅱ Advanced Chemical Environmental Engineering II | 1060222 | 2 | Terada・Riya | | ○ | | |
| | | 化学プロセス工学特論Ⅱ Advanced Chemical Process Engineering II | 1080222 | 2 | Yamashita | | ○ | | ○ |
| | | 量子光電子工学特論 Selected Topics in Quantum Electronics and Photonics | 1080405 | 2 | Miyaji | | | | ○ |
| | | 電子機能素子工学特論 Selected Topics in Electronic Functional Devices | 1080417 | 2 | (Sameshima) | ○ | | ○ | |
| | | 科学特論Ⅴ Engineering Science: Advanced Lecture V | 1080001 | 2 | | | | | |
| | | 科学特論Ⅵ Engineering Science: Advanced Lecture VI | 1080002 | 2 | | | | | |
| | | 科学特論Ⅶ Engineering Science: Advanced Lecture VII | 1080003 | 2 | TBD | | | | |
| | | 科学特論Ⅷ Engineering Science: Advanced Lecture VIII | 1080004 | 2 | | | | | |
| | | 技術マネジメント特論Ⅱ Technology Management II | 1080005 | 2 | TBD | | | | |
| | | 工学府特別講義 () Engineering(): Special Lecture | 1080006 | 2 | TBD | | | | |
| | | 工学府特別講義 () Engineering(): Special Lecture | 1080007 | 2 | TBD | | | | |
| | | 工学府特別講義 () Engineering(): Special Lecture | 1080008 | 2 | TBD | | | | |
| | | 工学府特別講義 (国際コミュニケーションⅠ) Engineering (International Communication I): Special Lecture | 1080009 | 1 | Agyeman | ○ | | ○ | |
| | | 工学府特別講義 (国際コミュニケーションⅡ) Engineering (International Communication II): Special Lecture | 1080010 | 1 | Agyeman | | ○ | | ○ |
| | | 工学府特別講義 (国際コミュニケーションⅢ) Engineering (International Communication III): Special Lecture | 1080011 | 1 | K. Shinohara | ○ | | ○ | |
| | | 研究マネジメント特論 (イノベーション) Management of R & D in Companies | 1080012 | 2 | TBD | | | | |
| | | インターンシップⅡ Internship II | 1083501～ | 2 | Instructor | | | | |
| | | 学内インターンシップⅡ On-campus Internship II | 1083701～ | 2 | Instructor | | | | |

◎: Required Subject
Other than ◎: Elective Subject
※: Cooperation Areas

マスターコース
物理システム工学専攻 博士前期課程 (PM) 教育課程表 (国際専修)
Department of Physics Systems Engineering Master Course (PM) Curriculum Table
(International Specialized Program)

| Course classification | | Course title | Course code | Credit | Instructor(s) | Academic year (Semester) | | | |
|-----------------------|---|--|-------------|--------|-----------------------------------|--------------------------|-----|------|-----|
| | | | | | | 2021 | | 2022 | |
| | | | | | | 1st | 2nd | 1st | 2nd |
| 量子系工学・複雑系工学 | Quantum and Complex Systems Engineering Courses | <input type="checkbox"/> 固体材料物性工学 Science and Engineering of Solid State Materials | 1060401 | 2 | Morishita | ○ | | | |
| | | <input type="checkbox"/> 原子分子分光光学 Atomic and Molecular Spectroscopy | 1060402 | 2 | Ukai | | | | ○ |
| | | <input type="checkbox"/> 量子光学 Quantum Optics | 1060403 | 2 | Muroo | | ○ | | |
| | | <input type="checkbox"/> 超伝導工学 Advanced Superconductivity | 1060410 | 2 | Yamamoto | | ○ | | |
| | | <input type="checkbox"/> ソフトマター物理工学 Soft Matter Physics | 1060407 | 2 | Murayama | | | ○ | |
| | | ◇ 応用力学 Advanced Mechanics | 1060485 | 2 | Kaji・Muroo | ○ | | | ○ |
| | | ◇ 応用電磁気学 Advanced Electromagnetism | 1060486 | 2 | Katori・Minoda | ○ | | ○ | |
| | | ◇ 応用熱統計力学 Thermodynamics and Statistical Mechanics | 1060487 | 2 | Misawa・(Undecided) | ○ | | ○ | |
| | | ◇ 応用量子力学 Advanced Quantum Mechanics | 1060488 | 2 | A. Hatakeyama・Maehashi | | ○ | | ○ |
| | | ◇ 応用物理数学 Advanced Mathematical Physics | 1060489 | 2 | Ikushima・Morishita | | ○ | | ○ |
| 専攻共通科目 | Major-specific Common Courses | ◎ 物理システム工学セミナーⅠ Applied Physics: Advanced Seminar I | | 4 | Instructor | | ○ | | ○ |
| | | 物理システム工学セミナーⅡ Applied Physics: Advanced Seminar II | | 4 | Instructor | | ○ | | ○ |
| | | ◎ 物理システム工学特別実験 Advanced Experiments in Applied Physics | | 2 | Instructor | | ○ | | ○ |
| | | 物理システム工学特別研究 Applied Physics: Advanced Research Program | | 4 | Instructor | | ○ | | ○ |
| 共通科目 | Common Courses | 生体機能工学フロンティア特論 Frontiers of Biofunction Engineering | 1060705 | 2 | Instructor | | ○ | | |
| | | 応用生物学フロンティア特論 Frontiers of Biotechnology | 1060706 | 2 | Instructor | | | | ○ |
| | | 生命工学英語特論Ⅰ International Research: Special Lecture Writing and Presentation for Biotechnology I | 1060187 | 2 | McGahan (Part-Time Instructor) | ○ | | ○ | |
| | | 生命工学英語特論Ⅱ International Research: Special Lecture Writing and Presentation for Biotechnology II | 1060188 | 2 | McGahan (Part-Time Instructor) | | ○ | | ○ |
| | | 物質応用化学講座特別講義Ⅰ Materials and Applied Chemistry: Special Advanced Lecture I | 1060207 | 2 | Noma | ○ | | | |
| | | 有機材料化学講座特別講義Ⅱ Organic and Polymer Materials Chemistry: Special Lecture II | 1060216 | 2 | M. Shimizu | ○ | | | |
| | | 環境化学工学特論Ⅰ Advanced Chemical Environmental Engineering I | 1060222 | 2 | Terada・Riya | | | | ○ |
| | | 制御システム特論 Advanced Control System Analysis | 1060307 | 2 | Pongsathorn | | ○ | | ○ |
| | | 機械要素解析特論 Advanced Analysis of Mechanical Components | 1060310 | 2 | Ikeda | | ○ | | |
| | | 機械システム工学特論 Advances in Mechanical Systems Engineering | 1060381 | 2 | Multiple Instructors | | ○ | | ○ |
| | | 並列処理・ネットワーク特論 Parallel Processing and Computer Networks | 1060603 | 2 | Nakajo | | ○ | | ○ |
| | | ビジュアルコンピューティング特論 Visual Computing | 1060604 | 2 | T. Saito | | ○ | | ○ |
| | | 科学特論Ⅰ Science: Special Lecture I | 1060001 | 2 | M. Ito | | | | |
| | | 科学特論Ⅱ Science: Special Lecture II | 1060004 | 2 | T. Sato | | ○ | | ○ |
| | | 科学特論Ⅲ Science: Special Lecture III | 1060007 | 2 | Tobishima | | | | |
| | | 科学特論Ⅳ Science: Special Lecture IV | 1060011 | 2 | Okano | | | | |
| | | 技術マネジメント特論Ⅰ Technology Management I | 1060013 | 2 | TBD | | | | |
| | | 技術革新論 Technological Innovation Theory | 1060014 | 2 | TBD | | | | |
| | | 短期インターンシップ Short-term Internship | 1064401～ | 1 | Instructor | | | | |
| | | インターンシップⅠ Internship I | 1064501～ | 2 | Instructor | | | | |
| | | 学内インターンシップⅠ On-campus Internship I | 1064701～ | 2 | Instructor | | | | |

◎: Required Subject

◇: Elective Required Subject (6 credits or more required), □: Elective Required Subject (4 credits or more required)

Other than ◎, ◇, and □: Elective Subject

マ ス タ ー コ ー ス
電気電子工学専攻 博士前期課程 (EM) 教育課程表 (国際専修)
Department of Electrical and Electronic Engineering Master Course (EM) Curriculum Table
(International Specialized Program)

| Course classification | | Course title | Course code | Credit | Instructor(s) | Academic year (Semester) | | | |
|-----------------------|---|--|-------------|--------|-----------------------------------|--------------------------|-----|------|-----|
| | | | | | | 2021 | | 2022 | |
| | | | | | | 1st | 2nd | 1st | 2nd |
| 電気電子システム工学・電子メディア工学 | Electrical and Electronic Systems Engineering, Electronic Media Engineering | 半導体薄膜工学特論 Advanced Semiconductor Thin Films Engineering | 1060503 | 2 | Ueno | | ○ | | ○ |
| | | 信号処理特論 Advanced Topics in Signal Processing | 1060504 | 2 | T. Tanaka | ○ | | ○ | |
| | | 通信工学特論 I Advanced Communication Engineering I | 1060508 | 2 | Umebayashi | | ○ | | ○ |
| | | 電磁波応用工学特論 I Advanced Applied Electromagnetic Wave Engineering I | 1060511 | 2 | Arima | ○ | | ○ | |
| 専攻共通科目 | Major-specific Common Courses | ◎ 電気電子工学セミナー I Electrical and Electronics Engineering: Seminar I | | 4 | Instructor | ○ | | ○ | |
| | | 電気電子工学セミナー II Electrical and Electronics Engineering: Seminar II | | 4 | Instructor | ○ | | ○ | |
| | | ◎ 電気電子工学特別実験 Special Experiments in Electrical and Electronics Engineering | | 2 | Instructor | ○ | | ○ | |
| | | 電気電子工学特別研究 Special Research in Electrical and Electronics Engineering | | 4 | Instructor | ○ | | ○ | |
| 共通科目 | Common Courses | 生体機能工学フロンティア特論 Frontiers of Biofunction Engineering | 1060705 | 2 | Instructor | | ○ | | |
| | | 応用生物学フロンティア特論 Frontiers of Biotechnology | 1060706 | 2 | Instructor | | | | ○ |
| | | 生命工学英語特論 I International Research: Special Lecture Writing and Presentation for Biotechnology I | 1060187 | 2 | McGahan (Part-Time Instructor) | ○ | | ○ | |
| | | 生命工学英語特論 II International Research: Special Lecture Writing and Presentation for Biotechnology II | 1060188 | 2 | McGahan (Part-Time Instructor) | | ○ | | ○ |
| | | 物質応用化学講座特別講義 I Materials and Applied Chemistry: Special Advanced Lecture I | 1060207 | 2 | Noma | ○ | | | |
| | | 有機材料化学講座特別講義 II Organic and Polymer Materials Chemistry: Special Lecture II | 1060216 | 2 | Atomi・M. Shimizu | ○ | | | |
| | | 環境化学工学特論 I Advanced Chemical Environmental Engineering I | 1060222 | 2 | Terada・Riya | | | | ○ |
| | | 制御システム特論 Advanced Control System Analysis | 1060307 | 2 | Pongsathorn | | ○ | | ○ |
| | | 機械要素解析特論 Advanced Analysis of Mechanical Components | 1060310 | 2 | Ikeda | | ○ | | |
| | | 機械システム工学特論 Advances in Mechanical Systems Engineering | 1060381 | 2 | Multiple Instructors | | ○ | | ○ |
| | | 応用量子力学 Advanced Quantum Mechanics | 1060488 | 2 | A. Hatakeyama・Maehashi | | ○ | | ○ |
| | | 並列処理・ネットワーク特論 Parallel Processing and Computer Networks | 1060603 | 2 | Nakajo | | ○ | | ○ |
| | | ビジュアルコンピューティング特論 Visual Computing | 1060604 | 2 | T. Saito | | ○ | | ○ |
| | | 科学特論 I Science: Special Lecture I | 1060001 | 2 | M. Ito | | | | |
| | | 科学特論 II Science: Special Lecture II | 1060004 | 2 | T. Sato | | ○ | | ○ |
| | | 科学特論 III Science: Special Lecture III | 1060007 | 2 | Tobishima | | | | |
| | | 科学特論 IV Science: Special Lecture IV | 1060011 | 2 | Okano | | | | |
| | | 技術マネジメント特論 I Technology Management I | 1060013 | 2 | TBD | | | | |
| | | 技術革新論 Technological Innovation Theory | 1060014 | 2 | TBD | | | | |
| | | 短期インターンシップ Short-term Internship | 1065401～ | 1 | Instructor | | | | |
| | | インターンシップ I Internship I | 1065501～ | 2 | Instructor | | | | |
| | | 学内インターンシップ I On-campus Internship I | 1065701～ | 2 | Instructor | | | | |

◎: Required Subject
Other than ◎: Elective Subject

マスタークース
情報工学専攻 博士前期課程 (SM) 教育課程表 (国際専修)
 Department of Computer and Information Sciences Master Course (SM) Curriculum Table
 (International Specialized Program)

| Course classification | | Course title | Course code | Credit | Instructor (s) | Academic year (Semester) | | | |
|-----------------------|-------------------------------|--|-------------|--------|-----------------------------------|--------------------------|-----|------|-----|
| | | | | | | 2021 | | 2022 | |
| | | | | | | 1st | 2nd | 1st | 2nd |
| 情報工学 | Computer Science Courses | ◇ 並列処理・ネットワーク特論 Parallel Processing and Computer Networks | 1060603 | 2 | Nakajo | | ○ | | ○ |
| | | ◇ ビジュアルコンピューティング特論 Visual Computing | 1060604 | 2 | T.Saito | | ○ | | ○ |
| | | ◎ 情報工学特別実験 Advanced Computer Experiments | See P21 | 2 | Instructor | | ○ | | ○ |
| 専攻共通科目 | Major-specific Common Courses | ◎ 情報工学セミナーⅠ Computer Science: Seminar I | See P21 | 4 | Instructor | | ○ | | ○ |
| | | ◇ 情報工学セミナーⅡ Computer Science: Seminar II | See P21 | 4 | Instructor | | ○ | | ○ |
| | | ◇ 情報工学特別研究 Advanced Computer Research | See P21 | 4 | Instructor | | ○ | | ○ |
| | | 情報工学輪講Ⅰ Literature Reading I | 1060682 | 1 | Instructor | ○ | | ○ | |
| | | 情報工学輪講Ⅱ Literature Reading II | 1060683 | 1 | Instructor | | ○ | | ○ |
| | | 情報工学輪講Ⅲ Literature Reading III | 1060684 | 1 | Instructor | ○ | | ○ | |
| | | 情報工学輪講Ⅳ Literature Reading IV | 1060685 | 1 | Instructor | | ○ | | ○ |
| | | 情報工学特別講義Ⅰ Advanced Topics in Computer Science I | 1060686 | 2 | TBD | | | | |
| | | 情報工学特別講義Ⅱ Advanced Topics in Computer Science II | 1060687 | 2 | TBD | | | | |
| 共通科目 | Common Courses | 生体機能工学フロンティア特論 Frontiers of Biofunction Engineering | 1060705 | 2 | Instructor | | ○ | | |
| | | 応用生物学フロンティア特論 Frontiers of Biotechnology | 1060706 | 2 | Instructor | | | | ○ |
| | | 生命工学英語特論Ⅰ International Research: Special Lecture Writing and Presentation for Biotechnology I | 1060187 | 2 | McGahan (Part-Time Instructor) | ○ | | ○ | |
| | | 生命工学英語特論Ⅱ International Research: Special Lecture Writing and Presentation for Biotechnology II | 1060188 | 2 | McGahan (Part-Time Instructor) | | ○ | | ○ |
| | | 物質応用化学講座特別講義Ⅰ Materials and Applied Chemistry: Special Advanced Lecture I | 1060207 | 2 | Noma | ○ | | | |
| | | 有機材料化学講座特別講義Ⅱ Organic and Polymer Materials Chemistry: Special Lecture II | 1060216 | 2 | Atomi・M. Shimizu | ○ | | | |
| | | 環境化学工学特論Ⅰ Advanced Chemical Environmental Engineering I | 1060222 | 2 | Terada・Riya | | | | ○ |
| | | 制御システム特論 Advanced Control System Analysis | 1060307 | 2 | Pongsathorn | | ○ | | ○ |
| | | 機械要素解析特論 Advanced Analysis of Mechanical Components | 1060310 | 2 | Ikeda | | ○ | | |
| | | 機械システム工学特論 Advances in Mechanical Systems Engineering | 1060381 | 2 | Multiple Instructors | | ○ | | ○ |
| | | 応用量子力学 Advanced Quantum Mechanics | 1060488 | 2 | A. Hatakeyama・Maehashi | | ○ | | ○ |
| | | 科学特論Ⅰ Science: Special Lecture I | 1060001 | 2 | M. Ito | | | | |
| | | 科学特論Ⅱ Science: Special Lecture II | 1060004 | 2 | T. Sato | | ○ | | ○ |
| | | 科学特論Ⅲ Science: Special Lecture III | 1060007 | 2 | Tobishima | | | | |
| | | 科学特論Ⅳ Science: Special Lecture IV | 1060011 | 2 | Okano | | | | |
| | | 技術マネジメント特論Ⅰ Technology Management I | 1060013 | 2 | TBD | | | | |
| | | 技術革新論 Technological Innovation Theory | 1060014 | 2 | TBD | | | | |
| | | 短期インターンシップ Short-term Internship | 1066401～ | 1 | Instructor | | | | |
| | | インターンシップⅠ Internship I | 1066501～ | 2 | Instructor | | | | |
| | | 学内インターンシップⅠ On-campus Internship I | 1066701～ | 2 | Instructor | | | | |

◎: Required Subject
 ◇: Elective Required Subject
 Other than ◎, ◇: Elective Subject

ドクターコース
電子情報工学専攻 博士後期課程 (AD) 教育課程表 (国際専修)
Department of Electronic and Information Engineering Doctoral Course (AD) Curriculum Table
(International Specialized Program)

| Course classification | | Course title | Course code | Credit | Instructor(s) | Academic year (Semester) | | | |
|-----------------------|---------------------------------|---|-------------|--------|-----------------------------------|--------------------------|-----|------|-----|
| | | | | | | 2021 | | 2022 | |
| | | | | | | 1st | 2nd | 1st | 2nd |
| 物理応用工学 | Applied Physics Courses | <input type="checkbox"/> 固体デバイス工学特論 Selected Topics in Solid State Devices | 1080409 | 2 | Maehashi | | ○ | | |
| | | <input type="checkbox"/> 量子光電子工学特論 Selected Topics in Quantum Electronics and Photonics | 1080405 | 2 | Miyaji | | | | ○ |
| | | <input type="checkbox"/> 半導体物性工学特論 Selected Topics in Semiconductor Materials | 1080406 | 2 | Ikushima | | | ○ | |
| | | <input type="checkbox"/> 磁気物性工学特論 Selected Topics in Magnetism in Condensed Matter | 1080408 | 2 | Katori | | | | ○ |
| | | <input type="checkbox"/> 電子線応用工学特論 Selected Topics in Electron Beam Physics | 1080404 | 2 | Minoda | ○ | | | |
| 電子応用工学 | Applied Electronics Engineering | 電子機能素子工学特論 Advanced Electronic Functional Device Engineering | 1080417 | 2 | Instructor | ○ | | ○ | |
| | | 新エネルギー工学特論 Advanced New Energies Engineering | 1080419 | 2 | Deng | ○ | | ○ | |
| 知能・情報工学 | Computer Science Course | 並列処理特論 Parallel Processing | 1080443 | 2 | Nakajo | | ○ | | ○ |
| 専攻共通科目 | Major-specific Common Courses | ◎ 電子情報工学特別セミナーⅠ Electronic and Information Engineering: Advanced Seminar I | | 2 | Instructor | | ○ | | ○ |
| | | 電子情報工学特別セミナーⅡ Electronic and Information Engineering: Advanced Seminar II | | 2 | Instructor | | ○ | | ○ |
| | | 電子情報工学特別セミナーⅢ Electronic and Information Engineering: Advanced Seminar III | | 2 | Instructor | | ○ | | ○ |
| | | 電子情報工学特別実習 Advanced Practices in Electronics and Information Engineering | 1080483 | 2 | TBD | | ○ | | ○ |
| | | ◎ 特別計画研究 Research Proposition for Selected Topics | | 6 | Instructor | | ○ | | ○ |
| | | 特別教育研修 Special Educational Training | 1084401～ | 2 | Instructor | | ○ | | ○ |
| 共通科目 | Common Courses | 先端生体機能工学フロンティア特論 Advanced Frontiers of Biofunction Engineering | 1080192 | 2 | Instructor | | ○ | | |
| | | 先端応用生物学フロンティア特論 Advanced Frontiers of Biotechnology | 1080193 | 2 | Instructor | | | | ○ |
| | | 先端生命工学英語特論Ⅰ International Research Writing and Presentation for Biotechnology: Advanced Lecture I | 1080184 | 2 | McGahan (Part-Time Instructor) | ○ | | ○ | |
| | | 先端生命工学英語特論Ⅱ International Research Writing and Presentation for Biotechnology: Advanced Lecture II | 1080185 | 2 | McGahan (Part-Time Instructor) | | ○ | | ○ |
| | | 環境化学工学特論Ⅱ Advanced Chemical Environmental Engineering II | 1060224 | 2 | Terada・Riya | | ○ | | |
| | | 化学プロセス工学特論Ⅱ Advanced Chemical Process Engineering II | 1080222 | 2 | Yamashita | | ○ | | ○ |
| | | 科学特論Ⅴ Engineering Science: Advanced Lecture V | 1080001 | 2 | | | | | |
| | | 科学特論Ⅵ Engineering Science: Advanced Lecture VI | 1080002 | 2 | | | | | |
| | | 科学特論Ⅶ Engineering Science: Advanced Lecture VII | 1080003 | 2 | TBD | | | | |
| | | 科学特論Ⅷ Engineering Science: Advanced Lecture VIII | 1080004 | 2 | | | | | |
| | | 技術マネジメント特論Ⅱ Technology Management II | 1080005 | 2 | TBD | | | | |
| | | 工学府特別講義 () Engineering(): Special Lecture | 1080006 | 2 | TBD | | | | |
| | | 工学府特別講義 () Engineering(): Special Lecture | 1080007 | 2 | TBD | | | | |
| | | 工学府特別講義 () Engineering(): Special Lecture | 1080008 | 2 | TBD | | | | |
| | | 工学府特別講義 (国際コミュニケーションⅠ) Engineering (International Communication I): Special Lecture | 1080009 | 1 | Agyeman | ○ | | ○ | |
| | | 工学府特別講義 (国際コミュニケーションⅡ) Engineering (International Communication II): Special Lecture | 1080010 | 1 | Agyeman | | ○ | | ○ |
| | | 工学府特別講義 (国際コミュニケーションⅢ) Engineering (International Communication III): Special Lecture | 1080011 | 1 | K. Shinohara | ○ | | ○ | |
| | | インターンシップⅡ Internship II | 1084501～ | 2 | Instructor | | | | |
| | | 学内インターンシップⅡ On-campus Internship II | 1084701～ | 2 | Instructor | | | | |

◎: Required Subject, Other than ◎: Elective Subject

□: Elective Required Subject (Only for Master Course students of Department of Physics Systems Engineering)

2021year

生命工学専攻 博士前期課程（LM）時間割番号【4月入学】
Master's Course in Biotechnology and Life Science (LM) Course code 【Enrollment in April】

(2021年4月入学生)
(Students enrolled in April 2021)

| | | | | | | | | | | |
|----------------------|---|--|--|---|---|--|---|--|---|--|
| 授業科目 Course title | 生体機能工学プレゼンテーション特論Ⅰ Biofunction Engineering: Presentation I | 生体機能工学プレゼンテーション特論Ⅱ Biofunction Engineering: Presentation II | 応用生物学プレゼンテーション特論Ⅰ Biotechnology: Presentation I | 応用生物学プレゼンテーション特論Ⅱ Biotechnology: Presentation II | ◎ 生命工学先端研究 Biotechnology and Life Science: Advanced Study | 生命工学セミナーⅠ Biotechnology and Life Science: Seminar I | 生命工学セミナーⅡ Biotechnology and Life Science: Seminar II | 生命工学セミナーⅢ Biotechnology and Life Science: Seminar III | 生命工学セミナーⅣ Biotechnology and Life Science: Seminar IV | ◎ 生命工学特別研究 Biotechnology and Life Science: Special Study |
| | 通年 year-round | 通年 year-round | 通年 year-round | 通年 year-round | 通年 year-round | 前期 1nd | 後期 2nd | 前期 1nd | 後期 2nd | 前期 1nd |
| 担当教員名 Instructor | 時間割番号 Course code (timetable number) | | | | | | | | | |
| モリ mori | 1061014 | 1061064 | 1061114 | 1061164 | 1061214 | 1061314 | 1061414 | 1061514 | 1061614 | 1061714 |
| | ① | ③ | ① | ③ | ① | ① | ② | ③ | ④ | ① |

- ①

この科目は一年時春（4月）に履修登録してください。
Students must register for this course in the spring of their first year (April).
- ②

この科目は一年時秋（10月）に履修登録してください。
Students must register for this course in the fall of their first year (October).
- ③

この科目は二年次春（4月）に履修登録してください。
Students must register for this course in the Spring (April) of their second year.
- ④

この科目は二年次秋（10月）に履修登録してください。
Students must register for this course in the fall (October) of their second year.

2021year

機械システム工学専攻 博士前期課程（MM）時間割番号【4月入学】
Master's Course in Mechanical Systems Engineering (PM) Course code 【Enrollment in April】

(2021年4月入学生) (Students enrolled in April 2021)

| 授業科目 Course title | ◎ 機械システム工学セミナーⅠ Mechanical Systems Engineering Thesis: Seminar I 通年 year-round | ◎ 機械システム工学セミナーⅡ Mechanical Systems Engineering Thesis: Seminar II 通年 year-round |
|--------------------------|---|--|
| 担当教員名 Instructor | 時 間 割 番 号 Course code (timetable number) | |
| 池田 Ikeda | 1063001 | 1063101 |
| 小笠原 Ogasawara | 1063025 | 1063125 |
| 高橋 Takahashi | 1063002 | 1063102 |
| 桑原 Kuwahara | 1063003 | 1063103 |
| 山中 Yamanaka | 1063004 | 1063104 |
| 高田 Takata | 1063007 | 1063107 |
| 亀田 Kameda | 1063006 | 1063106 |
| 田川義 Y. Tagawa | 1063005 | 1063105 |
| 花崎 Hanasaki | 1063008 | 1063108 |
| 安藤 Andou | 1063009 | 1063109 |
| 西田 Nishida | 1063011 | 1063111 |
| ベンチャー Venture | 1063012 | 1063112 |
| 毛利 Mouri | 1063013 | 1063113 |
| R. ポンサトーン R. PONGSATHORN | 1063014 | 1063114 |
| 鎌田 Kamada | 1063015 | 1063115 |
| 笹原 Sasahara | 1063017 | 1063117 |
| 中本 Nakamoto | 1063048 | 1063148 |
| 前田博 H. Maeda | 1063019 | 1063119 |
| 直井克 K. Naoi | 1063010 | 1063110 |
| 中園 Nakazono | 1063016 | 1063116 |
| 村田章 A. Murata | 1063020 | 1063120 |
| 堀 Hori | 1063022 | 1063122 |
| 岩本 Iwamoto | 1063021 | 1063121 |
| 岩見健 K. Iwami | 1063049 | 1063149 |
| 田川泰 Y. Tagawa | 1063023 | 1063123 |
| 夏 Natsu | 1063027 | 1063127 |
| 水内 Mizuuchi | 1063030 | 1063130 |
| 伊東道 M. Ito | 1063039 | 1063139 |
| 佐藤健 T. Sato | 1063040 | 1063140 |
| | ① | ② |

- ① この科目は一年時春（4月）に履修登録してください。
Students must register for this course in the spring of their first year (April).
- ② この科目は二年次春（4月）に履修登録してください。
Students must register for this course in the fall (April) of their second year.

2021year

情報工学専攻 博士前期課程（SM）時間割番号【4月入学】

Master's Course in Computer and Information Sciences (SM) Course code 【Enrollment in April】

(2021年4月入学生) (Students enrolled in April 2021)

| 授業科目 Course title | ◎ 情報工学 セミナーⅠ Computer Science: Seminar Ⅰ 通年 year-round | 情報工学 セミナーⅡ Computer Science: Seminar Ⅱ 通年 year-round | 情報工学 特別計画研究 Advanced Computer Research 通年 year-round | ◎ 情報工学 特別実験 Advanced Computer Experiments 通年 year-round |
|----------------------|---|--|--|--|
| 担当教員名 Instructor | 時 間 割 番 号 Course code (timetable number) | | | |
| 並木 Namiki | 1066005 | 1066105 | 1066205 | 1066305 |
| 原 Hara | 1066049 | 1066149 | 1066249 | 1066349 |
| 藤田欣 Kinya.Fujita | 1066014 | 1066114 | 1066214 | 1066314 |
| 金子 Kaneko | 1066013 | 1066113 | 1066213 | 1066313 |
| 山井 Yamai | 1066050 | 1066150 | 1066250 | 1066350 |
| 中條 Nakajo | 1066015 | 1066115 | 1066215 | 1066315 |
| 近藤 Kondo | 1066044 | 1066144 | 1066244 | 1066344 |
| 堀田 Hotta | 1066037 | 1066137 | 1066237 | 1066337 |
| 斎藤隆 T.Saito | 1066038 | 1066138 | 1066238 | 1066338 |
| 田中雄 Y.Tanaka | 1066019 | 1066119 | 1066219 | 1066319 |
| 宮代 Miyashiro | 1066004 | 1066104 | 1066204 | 1066304 |
| 山田浩 H.Yamada | 1066045 | 1066145 | 1066245 | 1066345 |
| 藤田桂 Katsuhide.Fujita | 1066046 | 1066146 | 1066246 | 1066346 |
| 清水郁 I.Shimizu | 1066031 | 1066131 | 1066231 | 1066331 |
| 渡辺峻 S.Watanabe | 1066032 | 1066132 | 1066232 | 1066332 |
| 中山 Nakayama | 1066009 | 1066109 | 1066209 | 1066309 |
| 篠原和 K.Shinohara | 1066022 | 1066122 | 1066222 | 1066322 |
| 宇野良 R.Uno | 1066008 | 1066108 | 1066208 | 1066308 |
| 村田実 M.Murata | 1066048 | 1066148 | 1066248 | 1066348 |
| | ① | ② | ① | ① |

①

この科目は一年時春（4月）に履修登録してください。
Students must register for this course in the spring of their first year (April).

②

この科目は二年次春（4月）に履修登録してください。
Students must register for this course in the fall (April) of their second year.

【2021year】

生命工学専攻 博士後期課程（LD）時間割番号

Department of Biotechnology and Life Science Doctoral
Course code (International Specialized Program)

| | | |
|---------------------------------|--|---|
| <p>授 業 科 目 Course title</p> | <p>◎</p> <p>生命工学特別セミナー I Biotechnology and Life Science: Special Seminar I</p> <p>★Registration in April</p> <p>通年科目 General Year Subjects</p> | <p>◎</p> <p>生命工学先端計画研究 Advanced Research Proposal on Biotechnology and Life Science</p> <p>★Registration in April</p> <p>前期科目 First semester Subjects (first and second quarters)</p> |
| <p>担当教員名 Instructor</p> | <p>時 間 割 番 号 Course code</p> | |
| <p>黒田 Kuroda</p> | <p>1081208</p> | <p>1081508</p> |

【2021year】

応用化学専攻 博士後期課程（CD）時間割番号

Department of Applied Chemistry Doctoral Course(CD) Curriculum Table
(International Specialized Program)

| 授 業 科 目 | ◎ 応用化学 セミナーⅢ Applied Chemistry: Advanced Seminar Ⅲ ★Registration in April (1st year) 通年科目 General Year Subjects | 応用化学 セミナーⅣ Applied Chemistry: Advanced Seminar IV ★Registration in April (2st year) 通年科目 General Year Subjects | 応用化学 セミナーⅤ Applied Chemistry: Advanced Seminar V ★Registration in April (3st year) 通年科目 General Year Subjects | ◎ 特別計画研究 Applied Chemistry: Special Research Planning ★Registration in April 通年科目 General Year Subjects |
|-------------------------|--|--|---|--|
| 担 当 教 員 名 Instructor | 時 間 割 番 号 Course code | | | |
| 櫻井誠 M. Sakurai | 1082023 | 1082123 | 1082223 | 1082323 |
| 寺田 Terada | 1082024 | 1082124 | 1082224 | 1082324 |
| 利谷 Riya | 1082010 | 1082110 | 1082210 | 1082310 |
| 滝山 H. Takiyama | 1082027 | 1082127 | 1082227 | 1082327 |
| 山下 Yamashita | 1082032 | 1082132 | 1082232 | 1082332 |
| 徳山 Tokuyama | 1082038 | 1082138 | 1082238 | 1082338 |
| 伏見 Fushimi | 1082041 | 1082141 | 1082241 | 1082341 |
| WULED LENGGORO | 1082042 | 1082142 | 1082242 | 1082342 |
| 大橋 Ohhashi | 1082001 | 1082101 | 1082201 | 1082301 |

アカウント ID・パスワードについて【重要】

2021年4月
2021/4

工学府 新入生 各位 To new students
学籍番号 Student ID No.
学 科 Affiliation
氏 名 Name

本学で利用できる下記システムのログイン名（方法）及びパスワードは下記のとおりです。

なお、利用開始は2021年4月2日(金)からです。

Your Account ID, Password and access method for using each system within the TUAT network are as follows. Access to the systems listed below will be available from **Friday, April 2nd**.

| 利用するシステム System Name | アカウント ID 等 Account ID | パスワード Password |
|---|--------------------------|---|
| 電子メールアドレス E-mail address | | |
| 電子計算機システム Electronic computer system ・ キャンパスネットワークに接続 (有線 LAN・無線 LAN) Connecting to the campus network (Wired LAN/Wireless LAN) ・ オンデマンドプリンタ On-demand printer ・ 仮想端末室 Virtual terminal service ・ 大容量ファイル共有サービス (TUAT Cabinet) Online storage service (TUAT Cabinet) | { TUAT-ID } | ※パスワードは各自で変更して 使用下さい。 Please change the password on your own. 詳細は 総合情報メディアセンターサイト http://www.imc.go.tuat.ac.jp/ Please visit Information Media Center website for details |
| SPICA (学務情報システム) SPICA (School Information System) https://spica.gakumu.tuat.ac.jp/portal2/ | { SPICA-ID } | |
| 学習管理システム(moodle) Learning management system(moodle) https://lms-2.tuat.ac.jp/moodle/ | { SPICA-ID } | |

上記に掲載されたメールアドレスに、大学からのお知らせをメールで送信することがありますので、必ずメールをチェックするようにして下さい。

※Note※

In order to purchase a school commuter pass, a Certificate of School Commuter Pass is necessary. Before using the Certificate of School Commuter Pass, fill in the necessary information such as your student ID number, affiliation, name, address, and commuting route between your home and TUAT, and get a school stamp at the Student Support Section of your faculty. You may receive e-mails from the University to the address indicated above, so be sure to check your TUAT e-mail account regularly.

[Information desk]

- About e-mail address and computer system
[Information Media Center] imc-help@go.tuat.ac.jp
- About Moodle moodle@ml.tuat.ac.jp
- About SPICA (School Information System Login)・Automated Certificate Issuance System
[Graduate School of Engineering] tkyomu1@cc.tuat.ac.jp
- About the library
[Fuchu Library] fservice@cc.tuat.ac.jp
[Koganei Library] johok@cc.tuat.ac.jp

| | |
|---|--|
| 証明書自動発行機 Automated Certificate Issuance System | 学生証 (ICカード) Student ID Card (IC card) |
| 図書館 (入館・貸し出し) Library (access and lending) | 学生証 (ICカード) Student ID Card (IC card) |

【内部進学される方へ】

内部進学前にフレンドリーメールアドレスを設定していた方は新しい ID への移管が必要です。

移管できる期間には限りがあります。詳しくは、総合情報メディアセンターのホームページをご覧ください。

[For students continuing to study at TUAT]

You can transfer the friendly email address. Please note that the transfer period is limited.

For details, please refer to the Information Media Center website.

(Information Media Center)

<https://sites.google.com/a/go.tuat.ac.jp/imc/home>

【証明書自動発行機】

[Automated Certificate Issuance System]

- ☐ 成績証明書
- ☐ 在学証明書
- ☐ 卒業・修了見込証明書
- ☐ 学生生徒旅客運賃割引証 (学割証) [学割は年間 15 枚まで]
- ☐ 健康診断証明書
- ☐ Academic Transcript
- ☐ Certificate of Enrollment
- ☐ Certificate of Expected Graduation / Completion
- ☐ Certificate of Qualification for Student Passenger Fare Discount (Student Discount Certificate) [Maximum number: 15 pieces /year]
- ☐ Health Examination Certificate

以上を発行しています。詳しくは、学生便覧をご覧ください。

The Automated Certificate Issuance System issues the above certificates. For details, please see the Campus Guide.

※注意※

通学定期乗車券を購入する際には、通学定期乗車券購入証明書が必要です。

学籍番号・所属・氏名・住所・通学区間の欄を記入し、各学部の学生担当窓口で受付印をもらってから、使用してください。

sample

IP/PW printed documents are sent to each new student (or supervisor)

Educational Computer System (edu@_{AT}2016) Startup Guide

Information Media Center, Tokyo University of Agriculture and Technology

The Information Media Center (IMC) at Tokyo University of Agriculture and Technology (TUAT) is the central organization responsible for information systems throughout the university, providing services such as the ATnet5 high-speed campus network and electronic computer systems for educational purposes. The IMC plays a key role in maintaining academic information platforms incorporating the latest and most advanced information and communication technologies and a wide variety of services, as well as ensuring a full-featured environment to facilitate activities throughout the university on the educational research side. This guide offers a concise summary of how to use the main services offered by TUAT's electronic computer systems.

Login ID and Password (TUAT-ID/SPICA-ID)

Using TUAT information systems such as the educational electronic computer system or the campus network requires a Login ID and Password. TUAT uses two IDs—the TUAT-ID and the SPICA-ID—depending on the primary function of the system used. Although these two IDs are distinct, they share a single common Password per user, so that whichever ID is to be used, you will use it with the same password.

>> TUAT-ID (Used primarily for systems provided by the IMC)

This is a new ID system introduced in 2016. The TUAT-ID is necessary to access services provided by IMC. Because this ID uses fewer character digits than in the past and the characters for each digit are set at random, the ID no longer bears any relation to the user's departmental or other affiliation. In anticipation of this ID being used increasingly to access off-campus services (via GakuNin, for example) in the future, the ID has been chosen to be difficult for individuals to guess. The TUAT Google Account and TUAT Microsoft Account also exist as accounts for cloud services based on the TUAT-ID (see the following page for more details).

TUAT-ID

Faculty: 6digits,
Student: 8digits

Common Password

SPICA-ID

Faculty/Student: 11digits

>> SPICA-ID (Used for SPICA and other legacy administrative systems)

This is an ID used to access administrative systems such as academic systems (SPICA) and employee portals. It is an 11-digit ID system based on employee number or student ID number (100+staff number for faculty members, 500+student number for students). This ID will continue to be used by administrative systems to retain compatibility with older systems. Since this ID is based on a faculty or student number, for services outside the university, we recommend using the TUAT-ID, whose values are more difficult to guess.

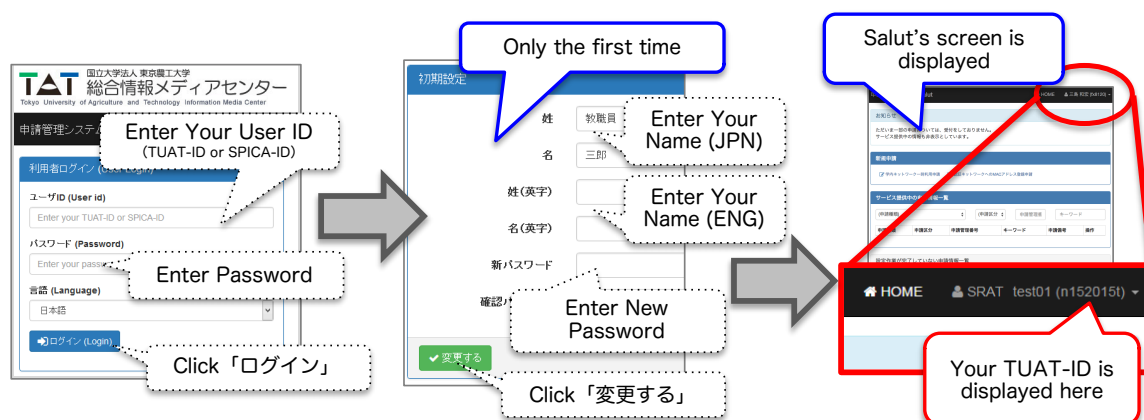
Changing your Initial Password and Confirming your TUAT-ID (Do this first!)

In order to use the electronic computer system, you must change your initial password, which you have already been assigned, and confirm your TUAT-ID. You will complete these steps using the IMC's Salut query-handling system. You may log in to Salut using either your TUAT-ID or your SPICA-ID. To confirm your TUAT-ID, first use your SPICA-ID and your initial password to log in to Salut, then change your initial password and confirm your ID. (You may also follow this procedure if you have forgotten your TUAT-ID.)

Your TUAT-ID

Application Management System 「Salut」
(Available from in-campus)

<https://kaeru.tuat.ac.jp/>



Handling of your Password (Important!)

Your password is a key piece of information used by TUAT's information systems to verify that you are really you. If your password ever leaks to another person, that person can effectively become you to access TUAT systems. Passwords can leak at any moment due to unanticipated circumstances—for example, someone looking over your shoulder may see your password as you enter it. Prolonged use of any password without modification creates heightened security risks, so be sure to use the application management system (Salut) to change your password regularly. Also, please take proper care to remember your password. If you forget your password, visit the IMC support desk with your staff or student ID. (Face-to-face confirmation at the support desk is necessary to have a password reissued.)

Security Measures for Your Own Device (Important!)

Many security incidents are occurred in campus network. IMC implements some security measures on the network side, but even if each user's device does not care the security, it will not be sufficient. At a more basic level, there are simple steps that each individual user can take to reduce the occurrence of security incidents. These are to **treat your password with care** and **implement security precautions on your own information systems** (installing the security management software, updating your computer software). Thus, the first step in preventing security incidents is for **all users to be vigilant from the beginning**. Our campus network has an automatic isolation system for highly security risk device.

Campus Network (Wired LAN / Wireless LAN)

The campus network of TUAT is called ATnet6. User can use this network through by Wired LAN with information outlet socket available on campus or Wireless LAN (tuatnet). All network connection requires 802.1x authentication. Your TUAT-ID and Password require for authentication. If you don't have TUAT-ID, it is necessary to acquire the temporary network usage account (Network-ID) through the receptionist of our university's full-time faculty or staff.

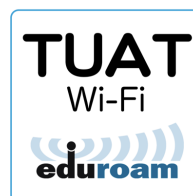
■Connection via the Wired LAN

Before connecting to the Wired LAN, confirm your device has Ethernet port. There are more cases without this port in recent laptop computer. The Wired LAN can be available to connect to the information outlet socket installed in the room. In some rooms, there may be a LAN cable directly. Please contact the building administrator for more detail information.

To use Wired LAN with 802.1x authentication, it is required to preliminary setting to your device. Refer the IMC website 「サービス一覧→キャンパスネットワーク→有線 LAN(ATnet6)」, and make an authentication setting. In addition, detailed information for major OS (Windows, macOS) is described at the IMC website 「各種資料」.

■Connection via the Wireless LAN

Our campus-wide Wireless LAN network is called “tuatnet”. There are many Wireless LAN access points in our campus. Our Wireless LAN access point is preferentially installed in places, such as lecture building, where students are easy to use for studying. Refer to the information below when connecting via Wireless LAN. We display the mark, shown in right, at the place where you can use Wireless LAN on campus (Wireless LAN is also available in some locations where there is no display of the mark).



ESSID: tuatnet / Type: 802.11a/b/g/n/ac (recommend to use 5GHz wireless band)
Security: 802.1x(WPA2-Enterprise) / Encryption: AES / Authentication Mechanism: PEAP,MSCHAPv2

eduroam (International Wireless Roaming Infrastructure)

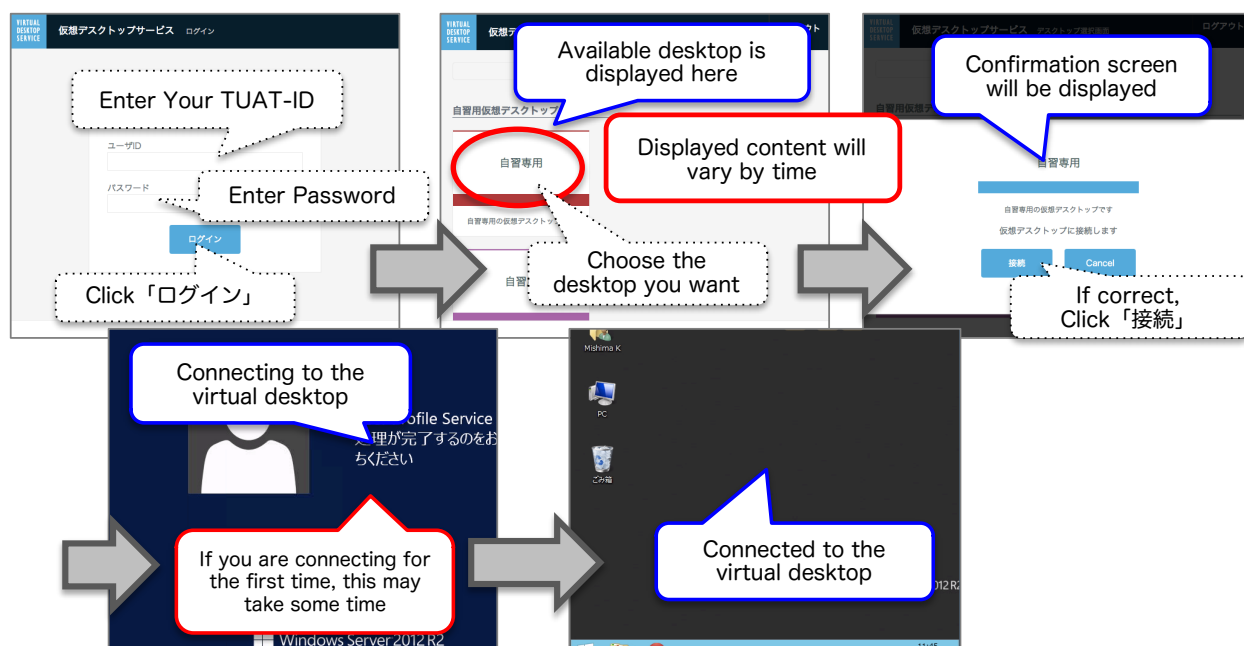
TUAT participates the eduroam partnership. Students and Faculty/Staff members of our university can use the Wireless LAN network on the visited eduroam participating organization regardless of domestic and overseas. It can be used with TUAT-ID and TUAT's eduroam realm (@eduroam.tuat.ac.jp). In addition, even if other eduroam participating organization member visits our university, it is possible to use the eduroam account for using our campuses guest Wireless LAN network without prior application. Not limited to academic institutions, eduroam can be available on some places, such as conference rooms and cafes.

Using Educational Computers (Virtual Computer Classroom)

All TUAT clusters now operate on a bring-your-own-device (BYOD) basis, in which users supply their own terminals; they are not conventional PC rooms. To absorb differences between user terminals and increase classroom convenience, IMC provides the Virtual Computer Classroom offering a common Windows desktop environment. Instructors may reserve as many desktops as necessary for a lesson for the students to access in the Virtual Computer Classroom. The virtual desktop may be accessed via the following URL in any HTML5-compliant browser, regardless of OS.

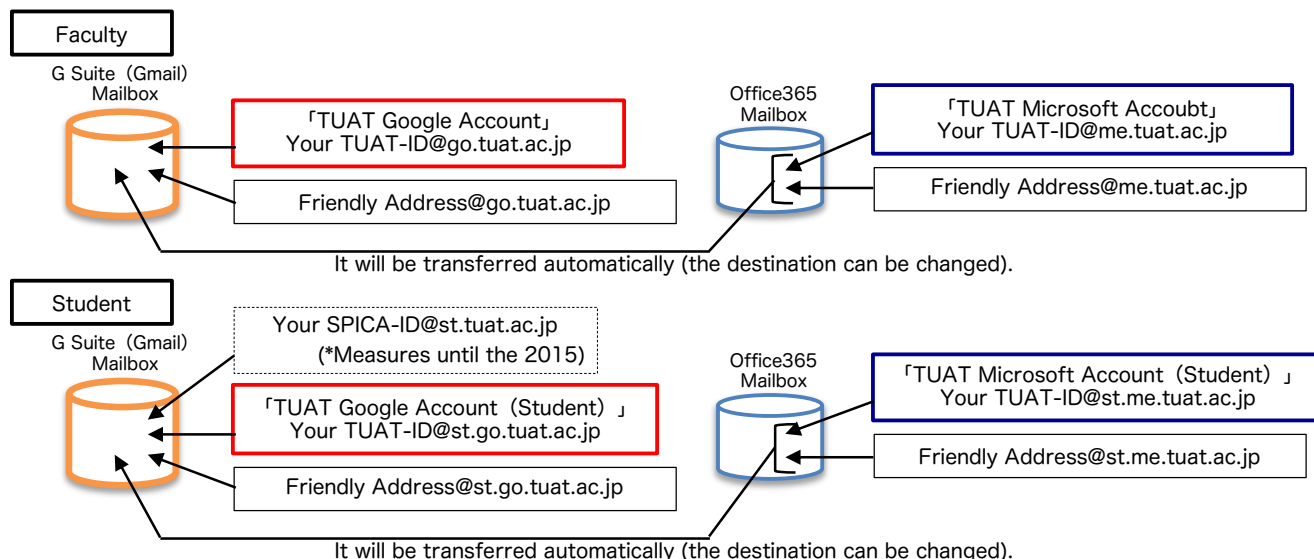
Access to Desktop (Available from in-campus)

<https://mydesk.ecs.tuat.ac.jp/>

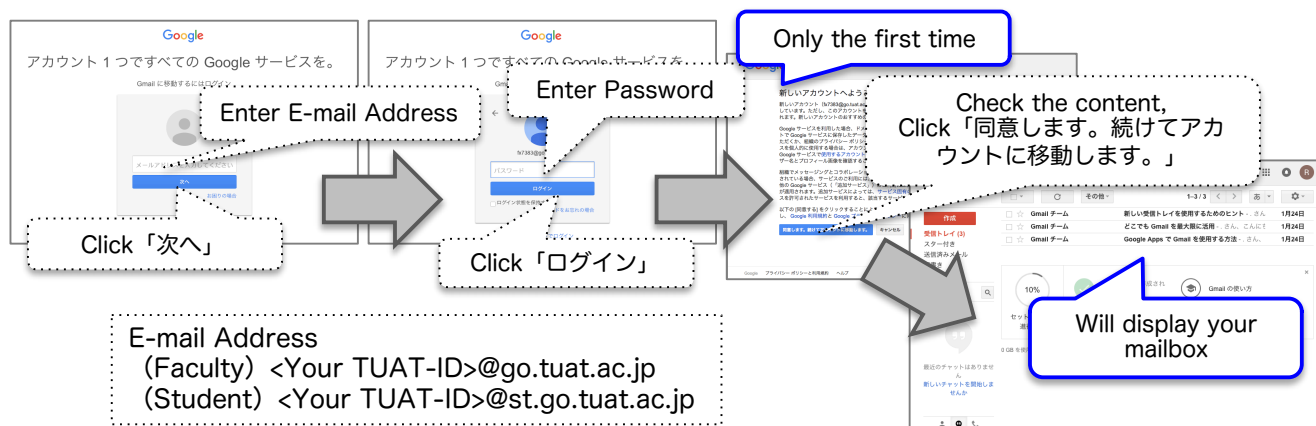


Using University Email Services (Gmail/Outlook Mail)

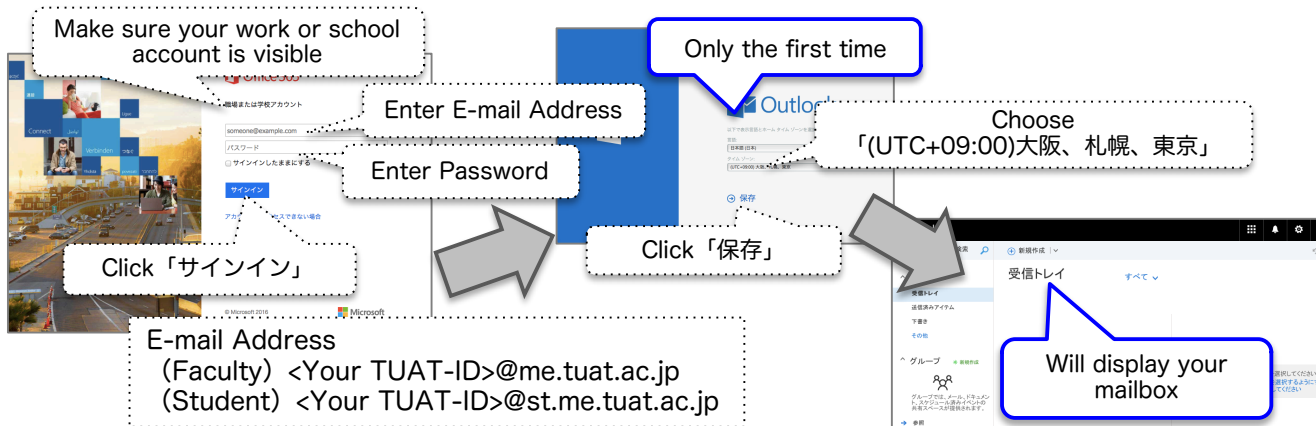
TUAT provides two university-wide cloud mail services to all faculty, staff, and student members. These are G Suite, which includes services such as Gmail and Google Drive, and Microsoft Office 365, which includes services such as Outlook Email and Office Online. G Suite is accessed via the TUAT Google Account, whereas Office 365 is accessed via the TUAT Microsoft Account. Both of these cloud services offer email services, and members of the TUAT may use either email service. The relationship between the email addresses associated with these two services is illustrated by the diagram below. The IMC recommends the use of G Suite, and the default account settings are configured such that emails sent to the Office 365 account are forwarded to your Gmail inbox.



■ Access the G Suite (Gmail) email service (<https://mail.google.com/>)



■ Access the Office365 email service (<https://mail.office365.com/>)



Office365 is initially set up to transfer to G Suite (Gmail), but if you use Office365 primarily, you need to change the settings by referring to the Information Media Center Web site.

Friendly Mail Address

The IMC also provides a framework known as friendly email addresses to ensure that email addresses are easy to understand. The features of the friendly mail address are as below. To use friendly mail address, you need to apply your desired address through the application management system (Salut).

■You can give your own name to the email address of the University Email Service

You can make your favorite name before @. It can be a user-friendly mail address.

■You can apply through the application management system (Salut) at online

■Friendly mail address can be set one address per user

Students can set up only once during the period of their enrollment.

Faculty and Staff member can change the friendly mail address via the application management system (Salut).

■You can apply for transfer of friendly mail address between users

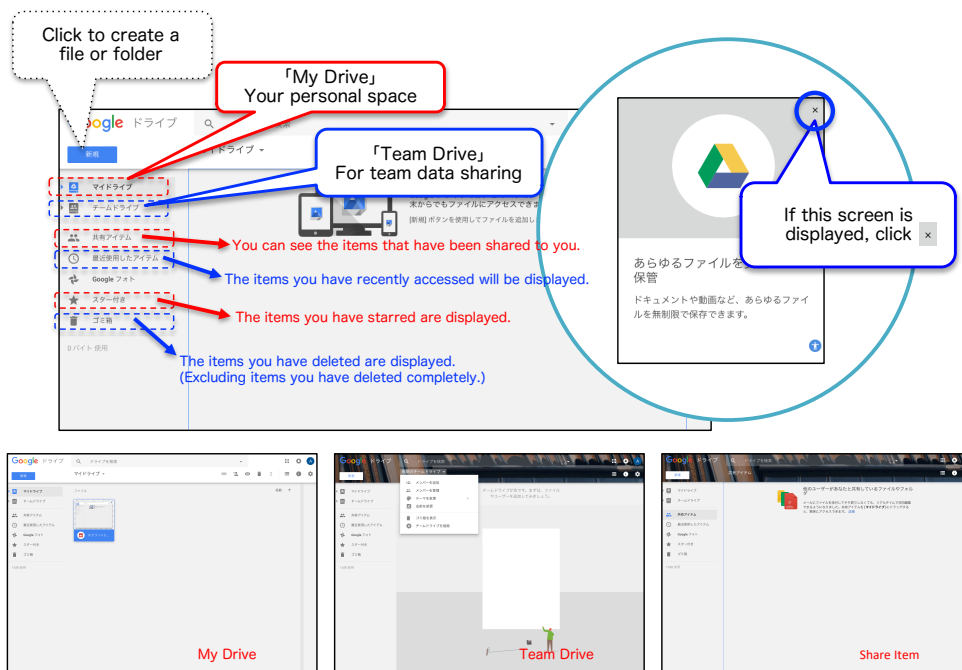
Friendly mail address can be transferred between users. If you are master course student, you can give your friendly mail address to new TUAT-ID (after going to graduate school) from old TUAT-ID (undergraduate). By doing this, you can set an e-mail address that will not change. The application period of transferring your friendly mail address is limited.

Using Google Drive (Storing the Large-size Files)

Google Drive allows you to store various data files on the cloud using the storage area of the Google cloud service. You can upload files for your own storage capacity (currently unlimited capacity). You can use Team Drive to share files in laboratories and departments. In addition to being able to access Google Drive through a web browser, you can also auto-sync by installing a dedicated client on your device. In our university, it is recommended not to use USB memory to exchange data between users, but to use the sharing function of Google Drive.

Access to Google Drive
(Use TUAT Google Account)

<https://drive.google.com/>



Using Google Classroom (Sharing the Course Materials)

Google Classroom is a simple learning management system that enables to share and collect the lecture materials, manage the class assignment. You can collaborate with Google Cloud service such as Google Drive and use them more conveniently. Prior application is unnecessary, and anyone can create a class (class creation is not limited to faculty). It can be used not only for classes but also for seminars and other activities.

Access to Google Classroom
(Use TUAT Google Account)

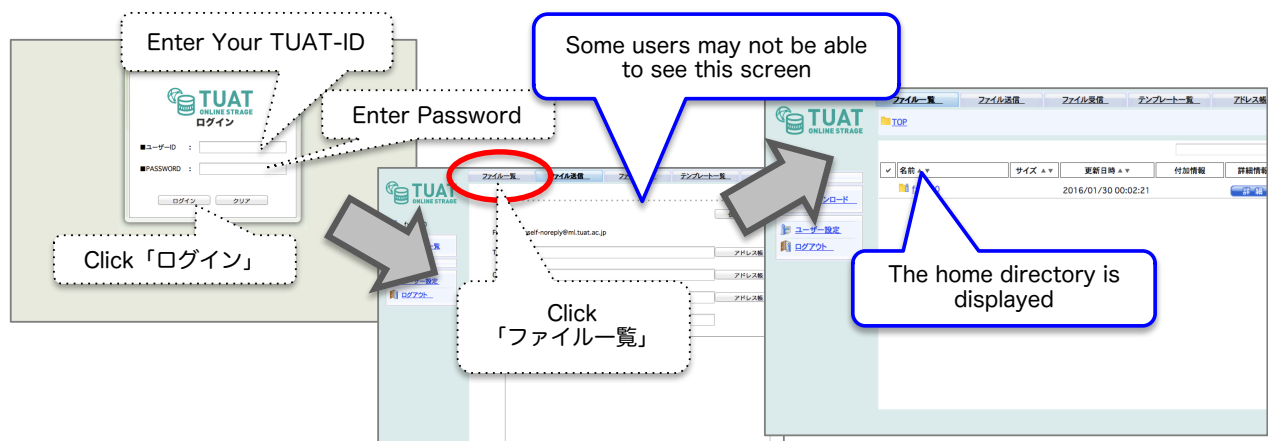
<https://classroom.google.com/>

Accessing your Home Directory (TUAT Cabinet)

User folders in the Windows desktop environment of the Virtual Computer Classroom, such as My Documents, are placed in a separate home directory located on the network for each individual user. Each individual's home directory is subject to limitations on storage capacity. Leaving large numbers of files in your home directory can cause problems, so we encourage you to clean up your files on a regular basis. To facilitate access to home directories, we offer the TUAT Cabinet service, which allows each user to access personal files via a Web browser from the user's terminal.

Access to Home Directory (TUAT Cabinet)

<https://cabinet.tuat.ac.jp/>



Using the On-demand Printing System

An on-demand printing system, allowing documents to be printed via the network from user terminals or the Windows desktop environment in the Virtual Computer Classroom, is available in several locations on campus. With this service, users transmit print instructions from their device, and then touch their faculty or student ID to any on-demand printer in the university to print their document from. (Login via TUAT-ID and Password is also possible.) A fee is charged for printing (Co-op prepaid cards must be purchased from the student center). Paper is provided and need not be supplied by users. Another extremely convenient possibility is to scan printed media to a USB memory stick (free of charge).

Using Microsoft Office Applications

Current faculty and students at TUAT may use Microsoft Office applications licensed by the university not only from the Virtual Computer Classroom but also from applications installed on personal terminals. Using this service requires accessing and logging into Office 365 using a TUAT Microsoft Account. For more information, see the IMC website.

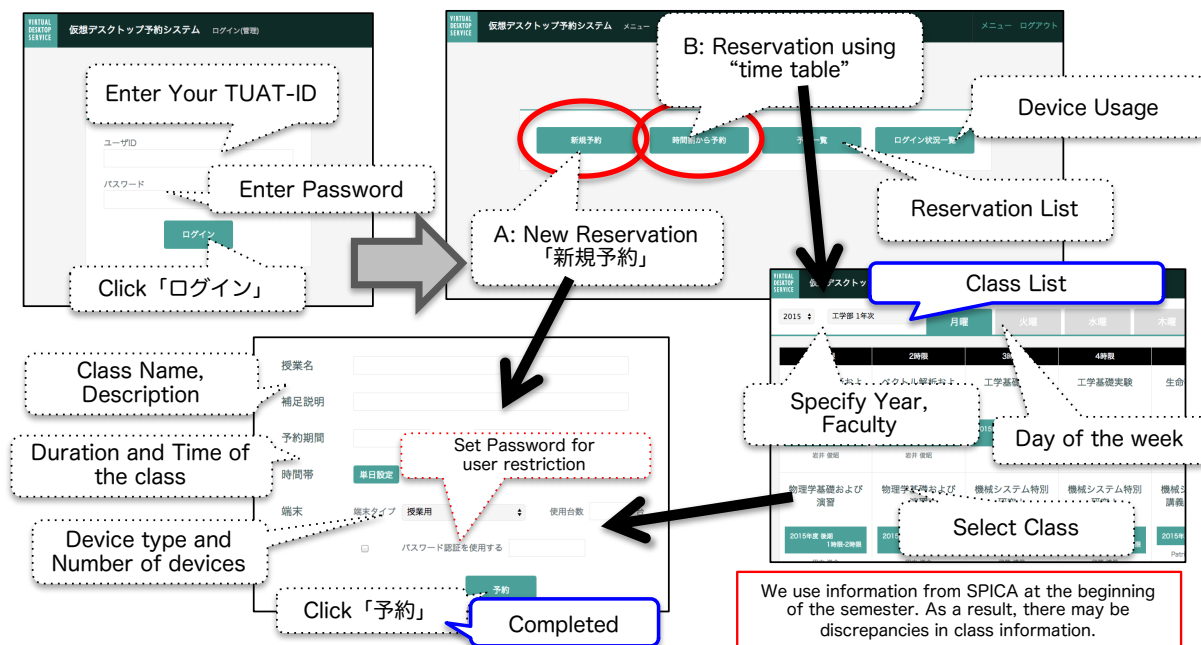
Reservation of Virtual Computer Classroom (Faculty / Staff Only)

You can make reservations for virtual computer classroom so that you can use it efficiently for lessons and student's self-study. Faculty member or class management person can reserve the number necessary for the class by making reservation the virtual terminal before the class.

Reservation

(Available from in-campus)

<https://mydesk.ecs.tuat.ac.jp/management/>



Inquiries for the IMC

E-mail Address: imc-help@go.tuat.ac.jp ※In general, inquiries are handled by email.

IMC Service Desk

Koganei Campus

Library Entrance
(or 5th floor of Building 8 if unstaffed)
Hours of operation: Monday–Friday
(excluding holidays) 08:45–17:00
(Extension) 7194
(External) 042-388-7194

Fuchu Campus

New Building 2, 2F
Hours of operation: Monday–Friday
(excluding holidays) 09:30–17:00
(Extension) 5794
(External) 042-367-5794

Service is suspended during summer, winter, spring, and New Year's breaks.
Service may also be suspended without notice at the discretion of the IMC.

This guide summarizes only the minimum information needed as of February 2018 to use services. The latest updates on various services, operating policies, policies on handling inquiries, and other information are available on the IMC website.

<IMC Web Site> <http://www.imc.go.tuat.ac.jp/>

SPICA basic operation procedure (for students)

(Tokyo University of Agriculture and Technology Student Information System)

[I] Access → login method

Click on "Student Life" from the top tab "Student Life / Employment Advancement"
official website of Tokyo University of Agriculture and Technology (<http://www.tuat.ac.jp/>)



Click "Information on using the School Information System (SPICA)".



Click on "SPICA Academic Information System Login Entry" to display the login screen.



- Enter your student ID number

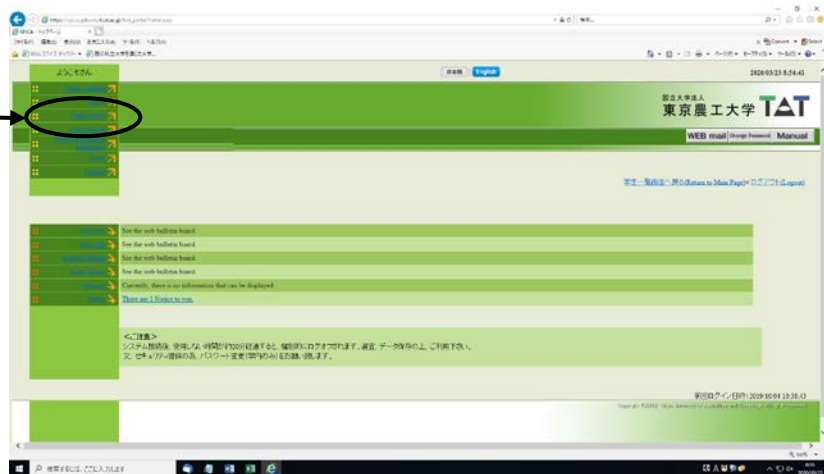
- Enter your password

- Click [login]

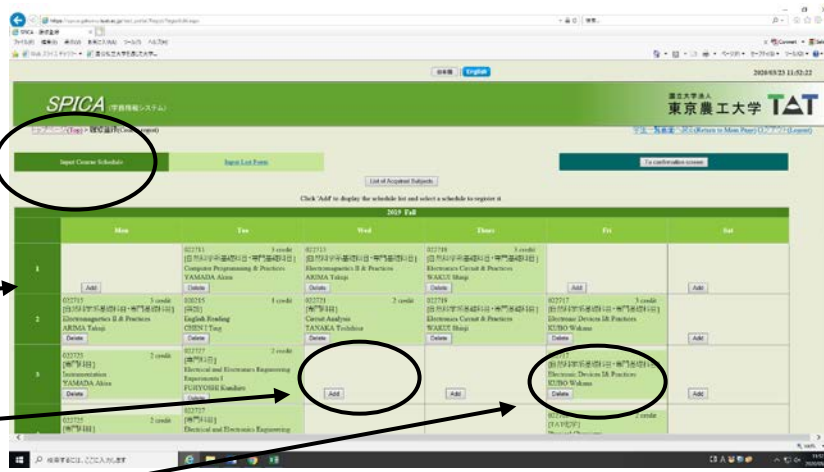
Select English

【II】 How to register the courses

- Click [Course registration]



- Calendar timetable

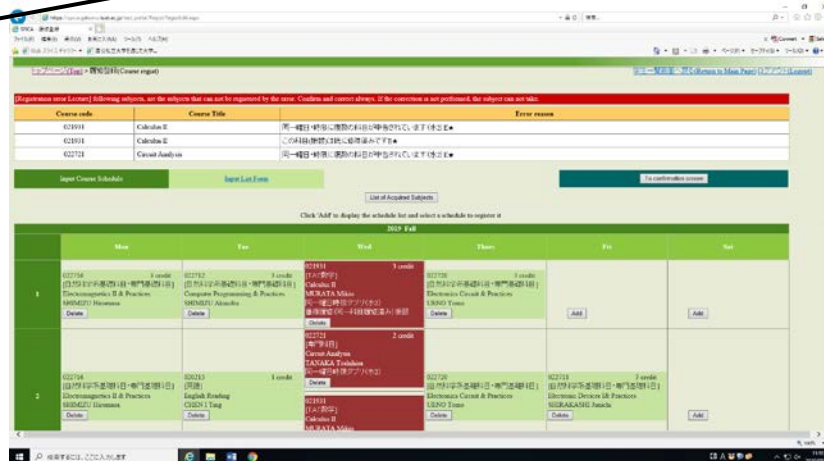


- Period 1 to 7 (時限)

- Click [Add in] to enroll in a new course

- Click [Delete] to cancel the registered course

- To register the intensive courses, please go to the lower part of the timetable which shows [Intensive courses]



※ If you do not need to register for any courses, please go to page 7.

- Choose the appropriate division for the appropriate course menu

※ To register for your department's courses, please refer to the next page

※ To register for the courses provided by other departments, please refer to page 8

※ The sub-course subject for Department of IEAS cannot be registered through this system. Please follow the instruction of the registrar.

Own department Teachers Other departments Other faculty

Own Courses Curator other courses

Tue 1

| | Faculty | Course No | Subject title | Instructor name | Credits | Classification |
|---|------------------------|-----------|-----------------------------------|-----------------|---------|----------------|
| 1 | Faculty of Agriculture | 01AN2404 | Agricultural Entomology II | ITO Katsuhiko | Add | 2 |
| 2 | Faculty of Agriculture | 01EN2216 | Ecosystem Ecology | WATANABE Makoto | Add | 2 |
| 3 | Faculty of Agriculture | 01RN2217 | Mountain Conservation Engineering | GOMI Takashi | Add | 2 |

Introduction to Forest Ecology TANIYAMA

List of Acquired Subjects

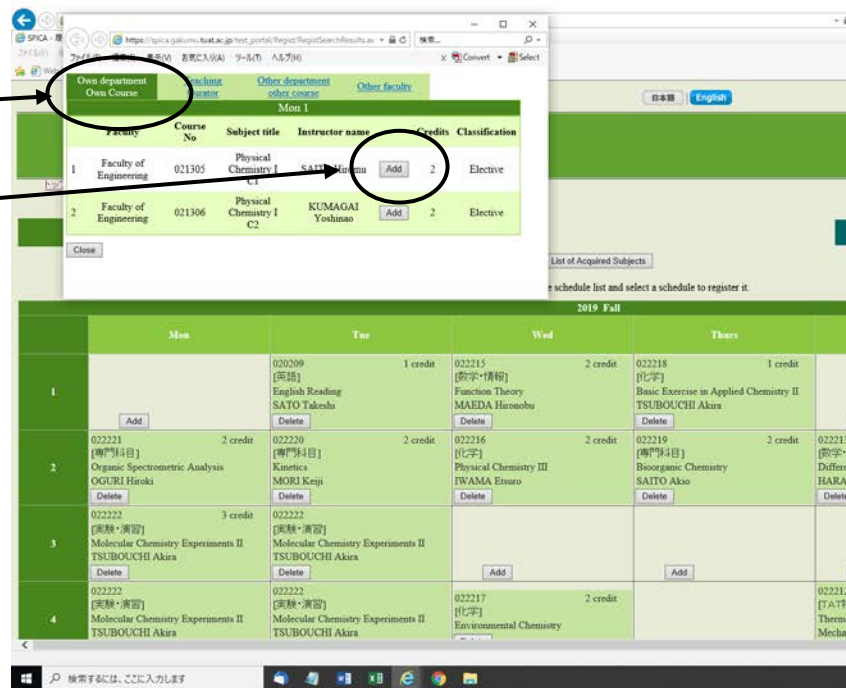
Click 'Add' to display the schedule list and select a schedule to register it.

2019 Fall

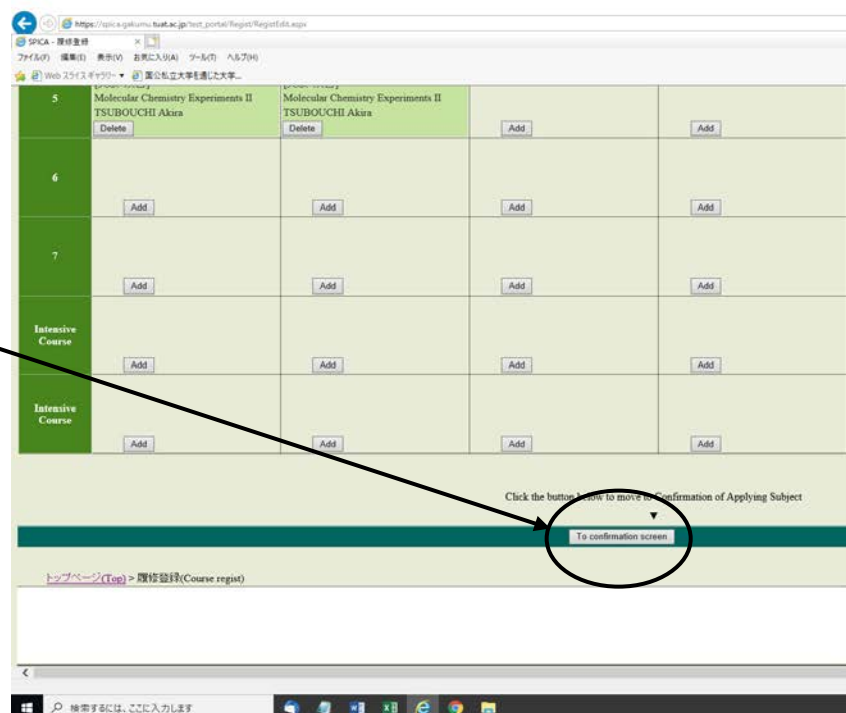
| | Mon | Tue | Wed | Thurs |
|---|-----|-----|-----|-------|
| 1 | Add | Add | Add | Add |
| 2 | Add | Add | Add | Add |
| 3 | Add | Add | Add | Add |
| 4 | | | | |

検索するには、ここに入力します

- Choose **[your own department]** for course list
- Choose courses from the course list and click **[Add in]** for registration

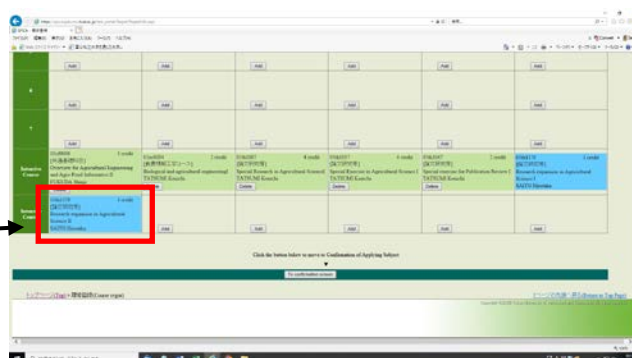


- Click **[Go to confirmation screen]** at the bottom of the screen

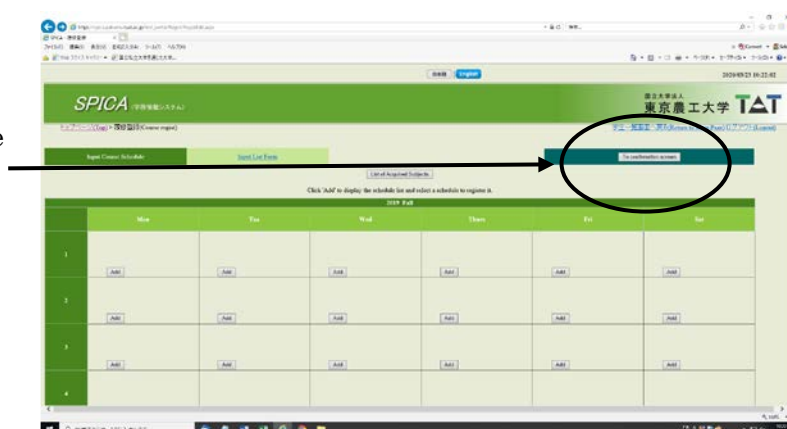


Additional information

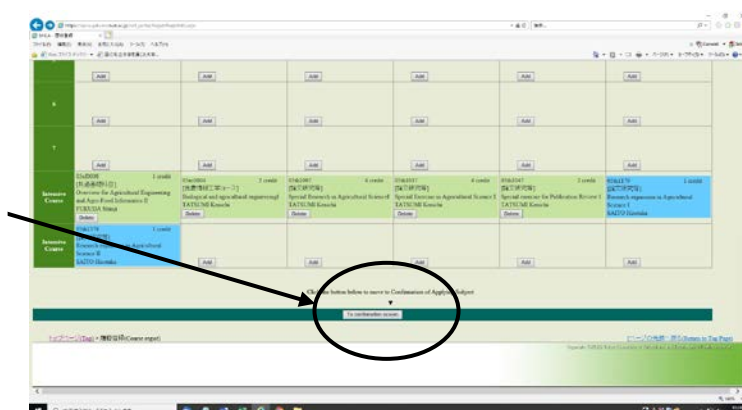
- If the cell turns red, it means error. You have to cancel the registration of the course



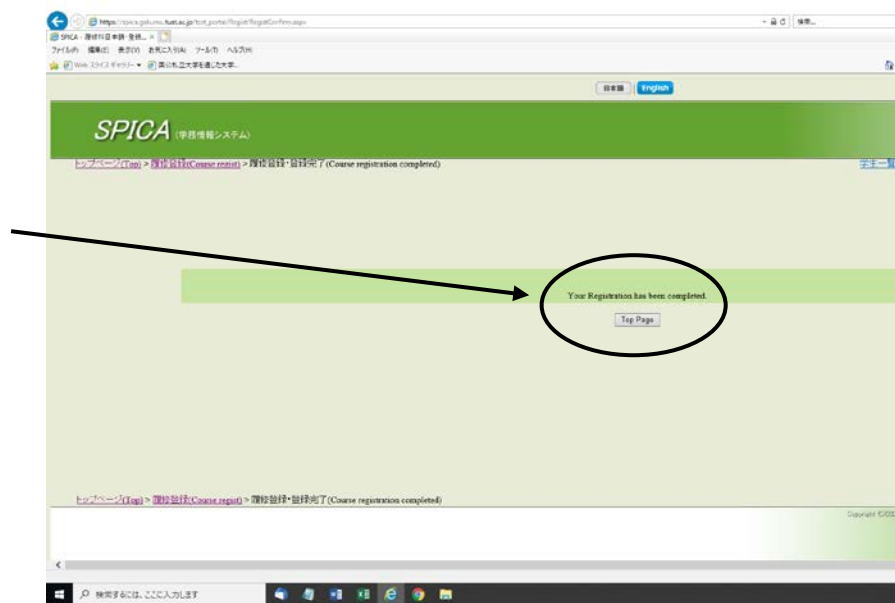
- You can print out your timetable by clicking [Print out]



- Click [Confirm] at the bottom of the screen to complete the registration

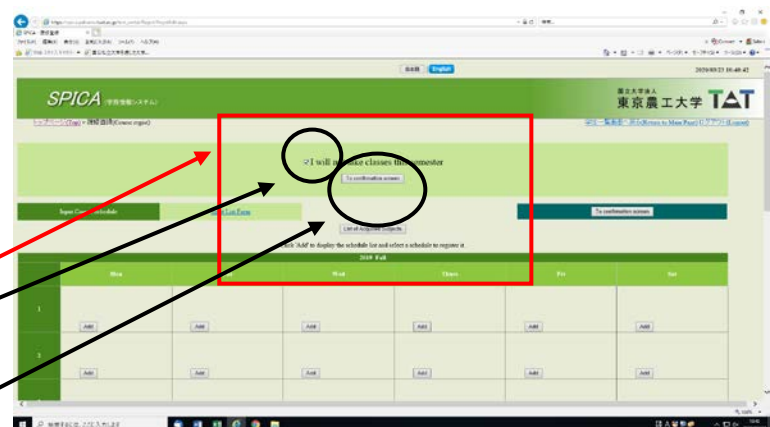


- Then the message **[Your registration has been completed]** will be displayed. Click **[Go back to top page]** to reconfirm your registration

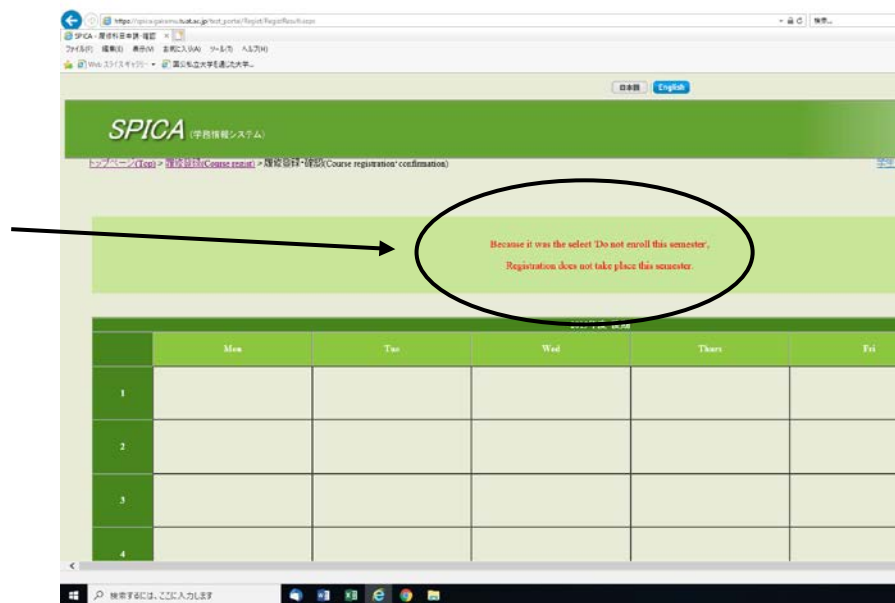


【III】 If you do not register for courses

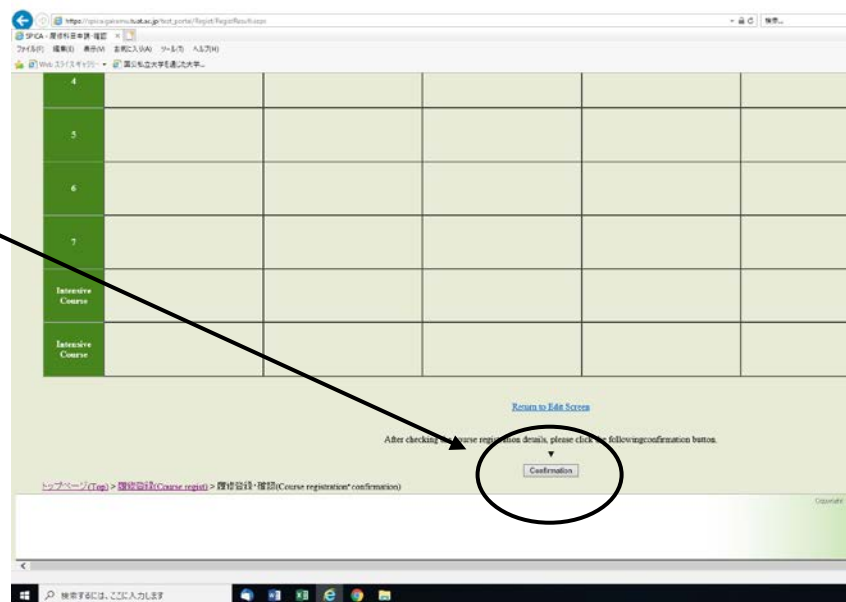
- Find the message **[No course registration for this semester]** at the top of the screen
- Check the box ☒
- Then click **[Confirmation screen]**



- The message [No registration for this semester] will be displayed



- Click [Confirm] at the bottom of the screen



【IV】 How to register for the courses provided by other departments

- Choose the [Input course schedule]

- Choose the day and click the [Add] for the appropriate course list

SPICA 学務情報システム

国立大学法人 東京農工大学 TAT

トップページ(Top) > 履修登録(Course regist)

学生一覧画面へ戻る(Return to Main Page) ログアウト(Loginout)

Input Course Schedule Input List Form To confirmation screen

List of Acquired Subjects

Click 'Add' to display the schedule list and select a schedule to register it.

2019 Fall

| | Mon | Tue | Wed | Thurs | Fri | Sat |
|---|-----|-----|-----|-------|-----|-----|
| 1 | Add | Add | Add | Add | Add | Add |
| 2 | Add | Add | Add | Add | Add | Add |
| 3 | Add | Add | Add | Add | Add | Add |
| 4 | Add | Add | Add | Add | Add | Add |

- Choose the appropriate division for the appropriate course menu

- Click [Add] to register

| Own department Own Course | | Teaching Curator | Other department other course | Other faculty | | |
|------------------------------|---------------------------|---------------------|--|----------------------|---------|----------------|
| Wed 1 | | | | | | |
| | Faculty | Course No | Subject title | Instructor name | Credits | Classification |
| 1 | Faculty of Engineering | 020224 | Academic Communication | James Baldwin | Add | 1 Elective |
| 2 | Faculty of Engineering | 022123 | Technical English for Life Scientists | MORI Tetsushi | Add | 1 |
| 3 | Faculty of Engineering | 022215 | Function Theory | MAEDA Hironobu | Add | 2 |
| 4 | Faculty of Engineering | 022324 | Exercises in Organic Chemistry I | YONEZAWA Noriyuki | Add | 1 |
| 5 | Faculty of Engineering | 022715 | Electromagnetics II & Practices | ARIMA Takuji | Add | 3 |
| 6 | Faculty of Engineering | 023208 | Chemical Engineering | MOTEKI Takahiko | Add | 2 |

Close

- To cancel the choice, click [Delete]

- To confirm the registration, click [Confirm]

SPICA 学務情報システム

国立大学法人 東京農工大学 TAT

トップページ(Top) > 履修登録(Course regist)

学生一覧画面へ戻る(Return to Main Page) ログアウト(Loginout)

Input Course Schedule Input List Form To confirmation screen

List of Acquired Subjects

Click 'Add' to display the schedule list and select a schedule to register it.

2019 Fall

| | Mon | Tue | Wed | Thurs | Fri | Sat |
|---|-----|-----|---|-------|-----|-----|
| 1 | Add | Add | 022123 1 credit [他学部専修科目] Technical English for Life Scientists MORI Tetsushi Delete Please click the Confirm button. Confirm | Add | Add | Add |
| 2 | Add | Add | Add | Add | Add | Add |

- [教員の許可は得ていますか？
(Do you get the permission from the teaching staff?)]

- はい(Yes)
- いいえ(No)
- 閉じる(Close the screen)

- If yes, the cell will turn yellow

- Click [To confirmation screen] at the bottom of the screen

- Click [Confirmation] at the bottom of the screen

【V】 How to view your academic record

- Click [Course Grade]



- Choose one



- Display all past grades

日本語 English 2020/03/23 9:42:48

SPICA (学務情報システム) 国立大学法人 東京農工大学 **TAT**

[トップページ\(Top\)](#) > [成績照会\(Course grades\)](#) > [成績明細\(Results\)](#) [学生一覧画面へ戻る\(Return to Main Page\)](#) [ログアウト\(Logout\)](#)

Number of items to display: 50 items at a time

Detail of course grades

| Year | Semester for evaluation | Subject title | Faculty staff | Credits | Evaluation | Credits classification |
|--------------------------------|-------------------------|---------------------------------------|---------------------|---------|------------|------------------------|
| 【全学共通教育科目】 | | | | | | |
| <大学導入科目> | | | | | | |
| 2016 | Spring | Basic Seminar of Agricultural Science | MOTOBAYASHI Takashi | 1.5 | S | Required |
| <持続可能な地球のための科学技術> | | | | | | |
| (自校教育) | | | | | | |
| 2016 | Spring | Introduction to MORE SENSE | TODA Hiroto | 0.5 | A | Required |
| (科学技術と社会) | | | | | | |
| 2016 | Spring | History of Agriculture | KOJIMA Yohei | 2 | C | Elective |
| 2016 | Spring | Food and Environmental Problems | YOSHIDA Hiroshi | 2 | A | Elective |

- Display GPA

日本語 English 2020/03/23 9:50:26

SPICA (学務情報システム) 国立大学法人 東京農工大学 **TAT**

[トップページ\(Top\)](#) > [成績照会\(Course grades\)](#) > [成績集計\(Grade Summary\)](#) [学生一覧画面へ戻る\(Return to Main Page\)](#) [ログアウト\(Logout\)](#)

2019 Spring

General Studies Special Filed

Credits classified by Subject

| | 教育 | 新入生 | グローバル教養 | グローバル英語 | グローバル算数 | グローバル健康 | 工専門 | 専門基礎 | 専門科目 | WISE | 工共通専門 | 博物館 |
|------------------|------|------|---------|---------|---------|---------|-------|------|------|------|-------|-----|
| Credits required | 23 | 3 | 8 | 9 | 2 | 1 | 92 | 46 | 46 | | | |
| Credits earned | 9 | 1 | 2 | 3 | | 3 | 11 | 11 | | | | |
| | 自由選択 | 他学科専 | 他学部専 | 学際交流 | 他大学 | GPP | TOTAL | | | | | |
| Credits required | | | | | | | | | | | | |
| Credits earned | | | | | | | 20 | | | | | |
| Credits required | | | | | | | | | | | | |
| Credits earned | | | | | | | | | | | | |

Others

Required credits

| | Required | Required | Elective | Total | Not Required |
|----------------|----------|----------|----------|-------|--------------|
| Credits earned | 13 | 3 | 4 | 20 | |

GPA

| Term | GPA | GPT | Number of Credits Included | Number of subjects included |
|-------------|------|------|----------------------------|-----------------------------|
| Total | 2.72 | 60.0 | 22 | 13 |
| 2019 Spring | 2.72 | 60.0 | 22 | 13 |

CAP

| Semester | Course maximum Credits |
|-----------|------------------------|
| 2019 Fall | 28 |

[トップページ\(Top\)](#) > [成績照会\(Course grades\)](#) > [成績集計\(Grade Summary\)](#) [1ページの先頭へ戻る\(Return to Top Page\)](#)

- Display Test Results

日本語 English 2020/03/23 10:08:51

SPICA (学務情報システム) 国立大学法人 東京農工大学 **TAT**

[トップページ\(Top\)](#) > [成績照会\(Course grades\)](#) > [各種試験結果\(Test Results\)](#) [学生一覧画面へ戻る\(Return to Main Page\)](#) [ログアウト\(Logout\)](#)

List of various test results

It is outside the release period or the test data has not been registered yet.